



10 MACHINE COMPONENTS

10.1 - List of spare parts

REFERENCE N°	DESCRIPTION	REFERENCE N°	DESCRIPTION
1	Machine bed	38	Burr-free plate
2	Revolving arm	39	Grain M8
3	Revolving arm locking pin	40	Screw M8
4	Revolving arm locking bush	41	Tank filter
5	Revolving arm locking lever	42	Screw M6
6	Screw M8	43	Bar stop rod
7	Countervice	44	
8	Pin	45	
9	Countervice jaws	46	Bar stop
10	Burr-free jaws	48	Screw M8
11	Countervice fixing pin	49	Support tank cover
12	Roller arm	50	Ring seeger Ø 42 I
13	Roller	51	Tank cover filter
14	Washer M10	52	Tank cover filter
15	Vite M10	53	Tank cover
16		54	Washer
17	Vice	55	1/4" gas tap
18	Vice jaws	56	Coolant tube
19	Vice jaws washer	57	Oiler Ø 8
20	Screw M12	58	Return spring connection
21	Vice jaws washer	59	Head return spring
22	Screw M12	60	Nut M12
23	Grain M8	61	Screw M12
24	Lever bush	62	Head
25	Quick lock vice lever	63	plug
26	Thrust bearing AX 3047 + CP 3047	64	Oil level plug
27	Quick lock vice lever washer	65	Oil drain plug
28	Vice closing handwheel Ø 18	66	Screw M10
29	Elastic pin Ø 5	67	Hinge pin
30	Washer	68	Hinge pin washer
31	Screw M8	69	Hinge pin bush
32		70	Grain M8
33		71	Nut M8
34		72	Nut M16
35	Vice thread	73	Head lever
36	Lock vice spring	74	Head lever handgrip
37	Burr-free transverse plate	75	GUK ring nut M25x1,5
		76	Worm wheel

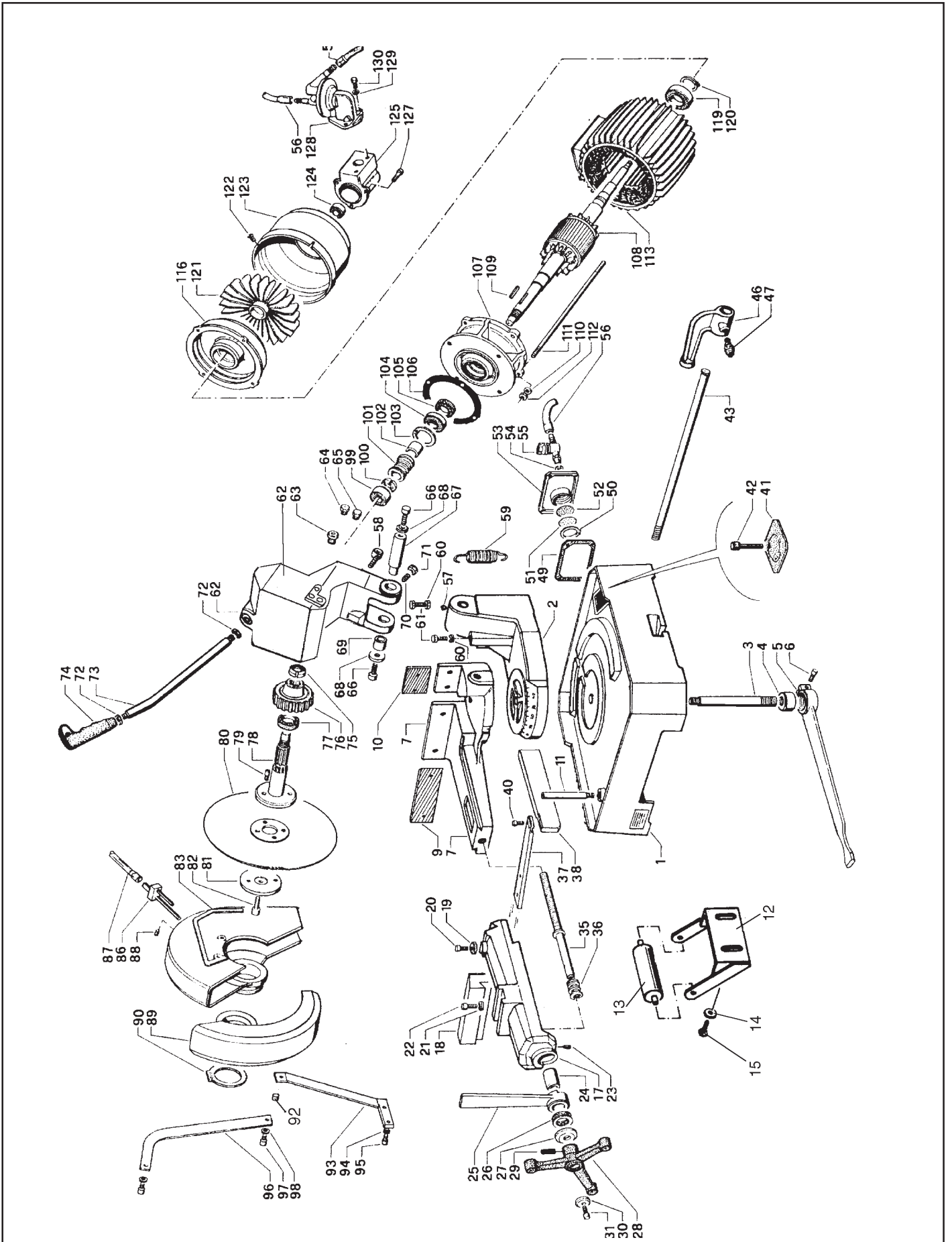


REFERENCE N°	DESCRIPTION
--------------	-------------

77	Ring SM 35-47-7
78	Blade shaft
79	Pin
80	Blade
81	Shaft flange stakes
82	Screw M12
83	Fixed blade guard
84	
85	
86	Coolant distributor
87	Coolant tube
88	Grain M6
89	Mobile blade guard
90	Ring seeger Ø 60E
91	
92	
93	Tir rod support
94	Washer
95	Screw M8
96	Mobile guard rod
97	Screw M8
98	Washer
99	Bearing 6301
100	GUK ring nut M17x1
101	Worm screw
102	Spacer
103	Spacer Ø 47
104	Bearing 3204
105	Ring DPSM 25-40-7
106	Head gasket
107	Front motor flange
108	Motor shaft (rotor)
109	Key
110	Washer
111	Stud bolt
112	Nut
113	Motor and stator casing
114	
115	
116	Rear motor flange
117	

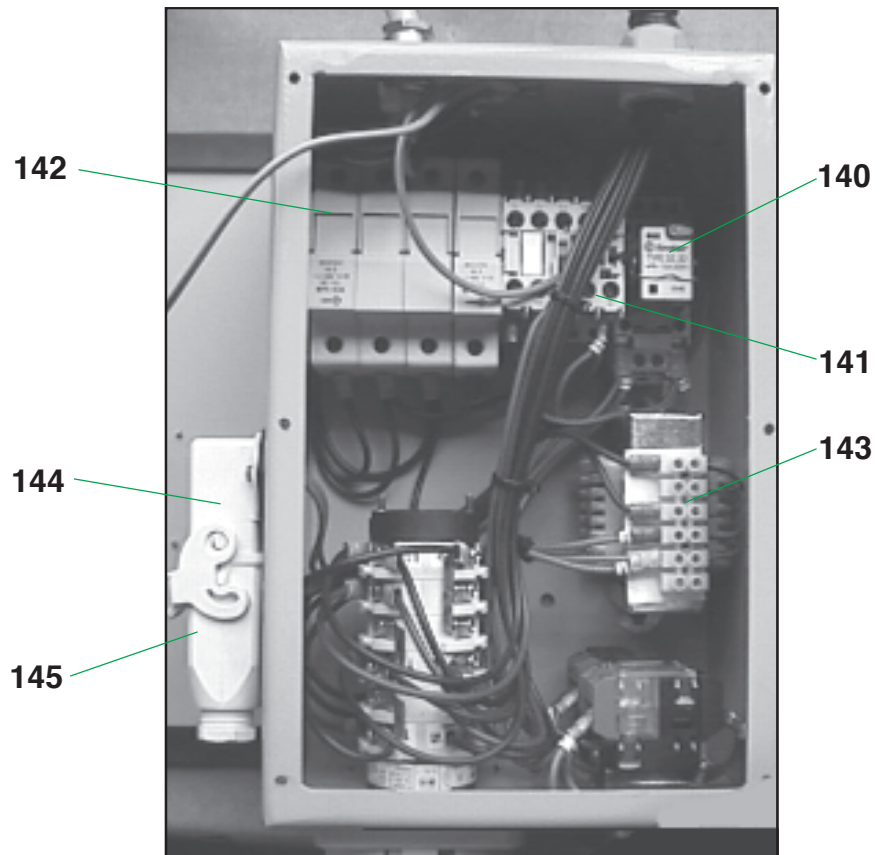
REFERENCE N°	DESCRIPTION
--------------	-------------

118	
119	Bearing 6205 2Z
120	Ring seeger Ø 25E
121	Fan
122	Screw M4
123	Fan cover
124	Bearing 609
125	Pump connection box
126	
127	Screw M5
128	Coolant pump
129	Washer
130	Screw M6



LEGENDA

- 140 Auxiliary relay
- 141 Remote control switch
- 142 Fuse carrier
- 143 Transformer
- 144 Socket connector
- 145 Plug connector



LEGENDA

- 146 Speed switch
- 147 Reset button
- 148 Emergency push button
- 149 Electric components box