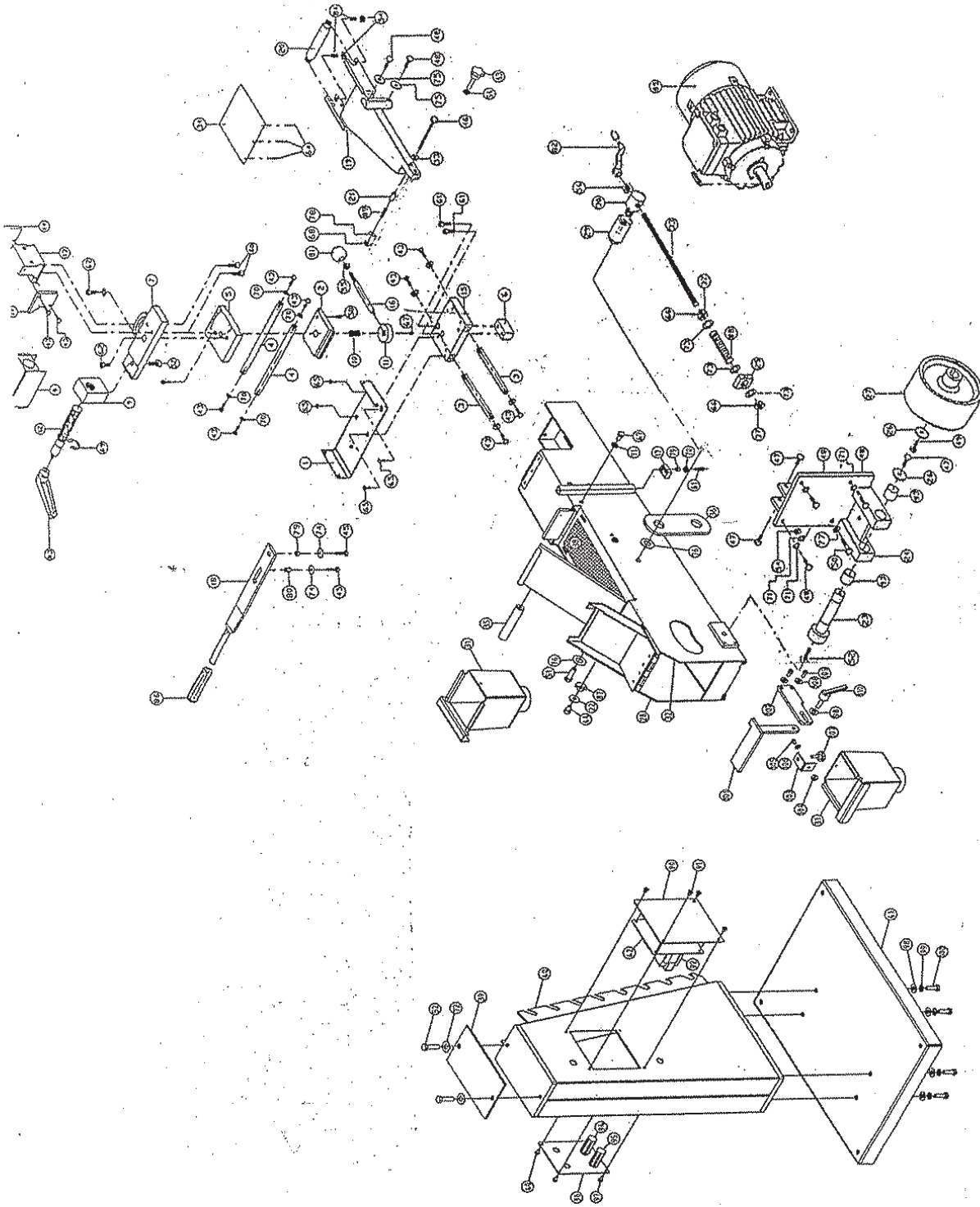


ONDERDEEL TEKENING



## Onderdelenlijst

Part No.	Description	QTY	Part No.	Description	QTY
1	Guiding seat	1	42	Fix plate of control box	1
2	Square sliding plate	1	43	Bolt M8X20	12
3	Short guiding shaft	2	44	Screw M10X15	1
4	Long guiding shaft	2	45	Bolt M8X30	2
5	Small slide block	1	46	Bolt M8X100	1
6	Small slide block	1	47	Bolt M10X20	4
7	Swivel base	1	48	Bolt M10X25	5
8	Frame of vice	1	49	Bolt M10X25	1
9	Nut block	1	50	Bolt M10X45	1
10	Locking nut	1	51	Bolt M12X40	1
11	Round locking block	1	52	Bolt M12X30	4
12	Lead screw	1	53	Washer 8	1
13	Fix block of jaw	1	54	Nut M10	4
14	Clamping plate of jaw	2	55	Nut M12	1
15	Bottom slide block	1	56	Nut M16	1
16	Locking bolt	1	57	Bolt M4X10	4
17	Saddle	1	58	Bolt M6X10	1
18	Moving handle of vice	1	59	Bolt M6X16	4
19	Bracket of back wheel	1	60	Bolt M8X20	2
20	Working roller	1	61	Bolt M8X25	2
21	Support sleeve	1	62	Bolt M10X20	3
22	Washer	1	63	Handle M10X50	1
23	Fixed shaft	1	64	Bolt M4X10	3
24	Bracket of motor	1	65	Bolt M6X16	4
25	Tension block	1	66	Locking bolt M6X8	2
26	Washer	1	67	Locking bolt M6X12	1
27	Driving wheel	1	68	Nut M8	2
28	Front guard plate	1	69	Washer on shaft 22	1
29	Bottom fixed pin	1	70	Washer 8	8
30	Upper fixed pin	1	71	Washer 10	5
31	Chip tray	2	72	Washer 12	2
32	Frame to machine	1	73	Washer 16	3
33	Long lead screw	1	74	Washer 8	2
34	Guard glass	1	75	Washer 10	3
35	Pulling shaft	1	76	Big washer 10	2
36	Flate plate	1	77	Locking washer 10	1
37	Nut M16	2	78	Washer 8	1
38	Graphite paper 100X400X2	1	79	Small sleeve	2
39	Insulation plate	1	80	Small sleeve	1
40	Stand column	1	81	Handle Knob M12	1
41	Bottom plate	1	82	Turning handle M8X71	1

## Onderdelenlijst

Part No.	Description	QTY	Part No.	Description	QTY
83	Adjustable locking handle M12	1	97	Bolt M6X16	4
84	Ball goggle bolt M10X17	2	98	Flat washer 10	5
85	Motor	1	99	Spring washer 10	4
86	Sleeve of handle 22	1	100	Bolt M10X25	4
87	Locking block	1	101	Work saddle	1
88	Spring	1	102	Plate	1
89	Spring	1	103	Fixed foot	1
90	Black cover plate	1	104	Nut M6	1
91	Bolt M6X16	4	105	Bolt M6X16	4
92	Transformer	1	106	Flat washer 6	1
93	Bush	2	107	Crossing handle M8X16	1
94	Switch of positive & negative	1	108	Flat washer 8	2
95	Switch of low and high speed	1	109	Bolt M8X25	2
96	Panel	1	110	Adjustable locking handle M10X25	1