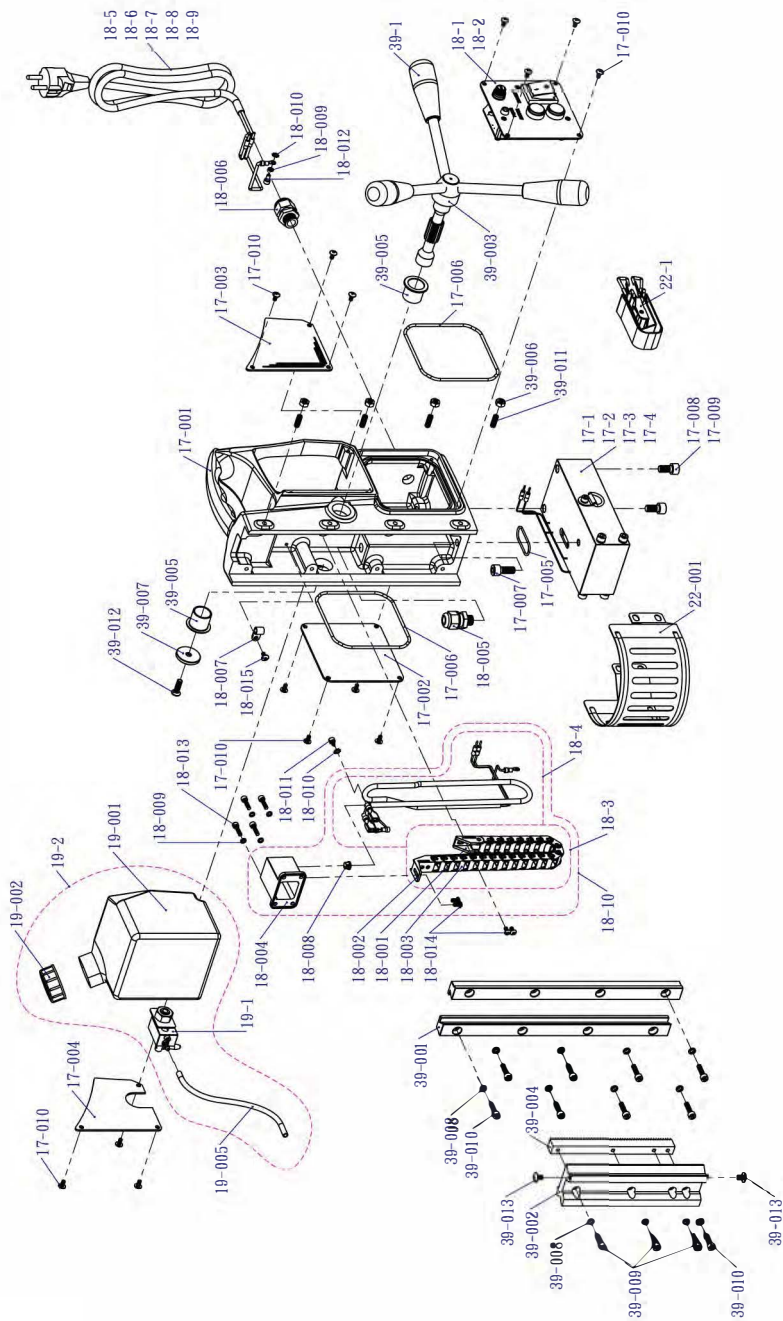


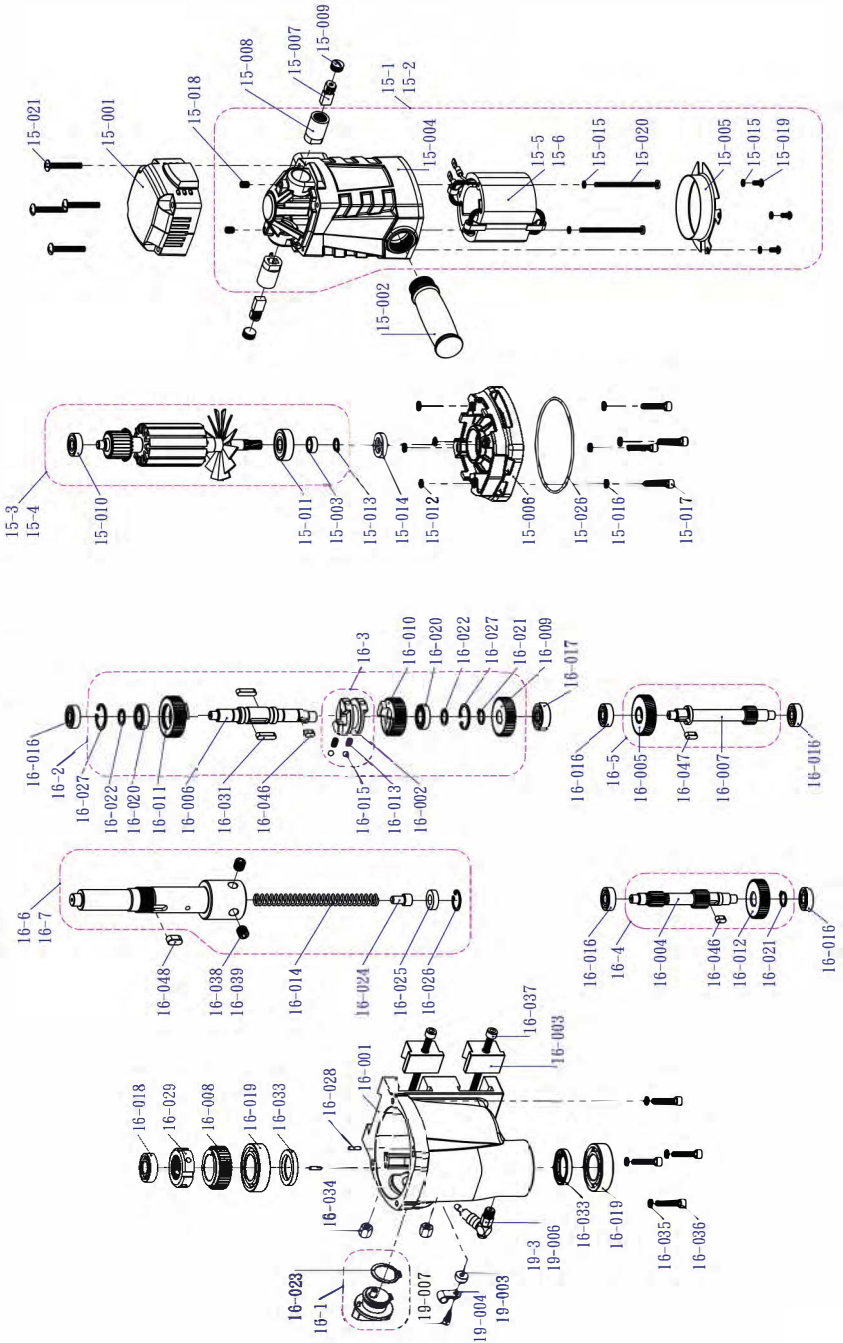
Onderdeeltkening SMD35 (1)

WISENT SMD35



WISENT SMD35

Onderdeeltkening SMD35(2)



Onderdelenlijst SMD35

No.	Part No.	Description	Specification	No.	Part No.	Description	Specification
15-1	L061504000402	Motor Set	220V	16-038	80101012501001	Hexagon Socket Headless Set Screw	M10xL1.25
15-2	L061504000602	Motor Set	110V	16-039	80101212501201	Hexagon Socket Headless Set Screw	M12xL1.25
15-3	L061504100001	Armature Set	220V	16-046	3551050501001	Double Head Round Key	5x5x10
15-4	L061504100301	Armature Set	110V	16-047	3551050501201	Double Head Round Key	5x5x12
15-5	L061504200002	Stator Set	220V	16-048	3551070701501	Double Head Round Key	7x7x15
15-6	L061504200102	Stator Set	110V	17-1	SMD1700300401	Magnetic Based Set	220V- Large
15-001	L061504000301	Motor Case Cover	-	17-2	SMD1700301101	Magnetic Based Set	110V- Large
15-002	L061525000101	Handle	-	17-3	SMD1700300101	Magnetic Based Set	220V- Standard
15-003	L061533700101	Wear Ring	T6.2xD15xD10	17-4	SMD1700301001	Magnetic Based Set	110V- Standard
15-004	L061504000501	Motor Case	-	17-001	SMD1700100101	Body	-
15-005	L061502100101	Air Duct	-	17-002	SMD1701200101	Specification Plate	-
15-006	SMD1502000201	Gear Box Cover	-	17-003	SMD1701200201	Coolant Tank Side Cover	-
15-007	045000001	Carbon Brush	-	17-004	SMD1701200301	Coolant Tank Side Cover	-
15-008	046000003	Carbon Brush Holder	-	17-005	34010322001	O-ring	S32-2.0
15-009	046000004	Carbon Brush Cap	-	17-006	34031103101	O-ring	G110-3.1
15-010	320060801	Ball Bearing with Cover	608- ZZ	17-007	80000812502001	Hexagon Socket Cap Head Screw	M8x1.25x20L
15-011	320062001	Ball Bearing with Cover	6200- ZZ	17-008	80000812501601	Hexagon Socket Cap Head Screw	M8x1.25x16L
15-012	34010061501	O-ring	56- Ø1.5	17-009	80000812504501	Hexagon Socket Cap Head Screw	M8x1.25x45L
15-013	3541011001	External Circlip	D10xL1.0	17-010	82400407000801	Cross Recessed Pan Head Screw	M4x0.7x8L
15-014	34101502400501	Rotary Oil Seal	TC- 15x24x5	18-1	SMD1801401201	Control Panel and PCB Set	220V
15-015	35320400801001	Spring Washer	M4	18-2	SMD1801401301	Control Panel and P CB Set	110V
15-016	35320500901301	Spring Washer	M5	18-3	SMD1824500501	Drag Chain Set	-
15-017	80000508002501	Hexagon Socket Cap Head Screw	M5x0.8x25L	18-4	SMD1828400902	Cable Set	-
15-018	80100610000801	Hexagon Socket Headless Set Screw	M6x1.0x8L	18-5	SMD1828400301	Power Cord Set	US
15-019	80400407000801	Hexagon Socket Button Head Screw	M4x0.7x8L	18-6	SMD1828400401	Power Cord Set	EU
15-020	82000407006501	Cross Recessed Pan Head Screw	M4x0.7x65L	18-7	SMD1828400501	Power Cord Set	UK
15-021	82400508003501	Cross Recessed Mushroom Head Screw	M5x0.8x35L	18-8	SMD1828400601	Power Cord Set	AU
15-026	34010902001	O-ring	590- Ø2.0	18-9	SMD1828400701	Power Cord Set	AU-10A
16-1	SMD1602000601	Rotary Switch Set	-	18-10	SMD1828600502	Complete Cable Chain Set	-
16-2	SMD1602000902	Driving Shaft	-	18-001	SMD1824500201	Chain Head A	-
16-3	SMD1602001001	Clutch Set	-	18-002	SMD1824500301	Chain Head B	-
16-4	SMD1602001302	Driving Shaft Set	-	18-003	SMD1824500401	Drag Chain	-
16-5	SMD1602001402	Driving Shaft Set	-	18-004	SMD1828600601	Terminal Box	-
16-6	SMD1627100602	Spindle Set	M10	18-005	285000001	Cable Fixed Head	-
16-7	SMD1627100802	Spindle Set	M12	18-006	285000002	Cable Fixed Head	-
16-001	SMD1602001101	Gear Box	-	18-007	285000003	Cable Tie	Ø6.5
16-002	SMD1602000401	Clutch	-	18-008	286000001	Circlip Cable Bush	-
16-003	SMD1602000501	Wedge Block	-	18-009	35320400801001	Spring Washer	M4
16-004	SMD1602001201	Driving Shaft	-	18-010	35340400900501	External Tooth Washer	M4
16-005	SMD16020020101	Helical Gear	-	18-011	80000407000501	Hexagon Socket Cap Head Screw	M4x0.7x5L
16-006	SMD1602001501	Driving Shaft	-	18-012	80000407000801	Hexagon Socket Cap Head Screw	M4x0.7x8L
16-007	SMD1602001601	Driving Shaft	-	18-013	80000407001601	Hexagon Socket Cap Head Screw	M4x0.7x16L
16-008	SMD1620000201	Spur Gear	-	18-014	80000508002501	Hexagon Socket Button Head Screw	M4x0.7x8L
16-009	SMD1620000301	Spur Gear	-	18-015	82400407000801	Cross Recessed Pan Head Screw	M4x0.7x8L
16-010	SMD1620000401	Spur Gear	-	19-1	SMD1901100601	Discharge Valve Set	-
16-011	SMD1620000501	Spur Gear	-	19-2	SMD1901100701	Coolant Tank Set	-
16-012	SMD1620000601	Spur Gear	-	19-3	SMD1935000201	Quick Coupling Set	-
16-013	261000002	Wire Spring	Ø4.8x8LxØ6	19-001	SMD1901100101	Coolant Tank (Purchased with Cover)	-
16-014	261000005	Wire Spring	Ø11.5x128Lx1.6	19-002	SMD1901100201	Plastic Cap	-
16-015	299050001	Steel Ball	Ø5	19-003	SMD1906200101	Rubber Spacer	M4x12x5.0
16-016	320060802	Ball Bearing	608	19-004	285000003	Cable Tie	Ø6.5
16-017	3200600001	Ball Bearing	6000	19-005	349000001	Plastic Pipe	4x6
16-018	320060101	Ball Bearing	6001	19-006	350000003	Plastic Elbow Set (90°)	-
16-019	3200600501	Ball Bearing	6005	19-007	80000407001001	Hexagon Socket Cap Head Screw	M4x0.7x10L
16-020	3200690101	Ball Bearing	6901	22-1	SMD2260000101	Mesh Belt	-
16-021	35410121001	External Circlip	D12xL1.0	22-001	SMD22015000101	Protective Cover	-
16-022	35410121002	External Circlip	D12xL1.0 (1.5)	39-1	SMD3912000101	Handle Lever	-
16-023	35410241201	External Circlip	D24xL1.2	39-001	SMD3900800101	Slide Rail	-
16-024	M12025600101	Spring Bolt	Ø11.2x20	39-002	SMD3900800201	Slide	-
16-025	M17033600101	Internal Water Proof Ring	-	39-003	SMD3912000401	Handle Shaft	-
16-026	35420191001	Internal Circlip	D19xL1.0	39-004	SMD3920500101	Gear Rack	-
16-027	35420241201	Internal Circlip	D24xL1.2	39-005	338000001	Bushing	-
16-028	35630301201	Spring Pin	Ø3x1.2L	39-006	35110061000501	Nut	M6x1
16-029	352202515001	Precision Lock Nut	M25x1.5	39-007	35310703000501	Thick Washer	M6- 7x6x0.5
16-031	3541005020001	Double Head Round Key	5x5x20	39-008	35320500901301	Spring Washer	M5
16-033	34102503500501	Rotary Oil Seal	TC- 25x35x5	39-009	80000508001601	Hexagon Socket Cap Head Screw	M5x0.8x16L
16-034	35110061001001	Nut	M6x1x10L	39-010	80000508002001	Hexagon Socket Cap Head Screw	M5x0.8x20L
16-035	35320500901301	Spring Washer	M5	39-011	80100610001701	Hexagon Socket Headless Set Screw	M6x1.0x17L
16-036	80000508002501	Hexagon Socket Cap Head Screw	M5x0.8x25L	39-012	82300610002001	Cross Recessed Countersunk Head Screw	M6x1.0x20L
16-037	80000610000801	Hexagon Socket Cap Head Screw	M6x1.0x80L	39-013	82400508000801	Cross Recessed Pan Head Screw	M5x0.8x8L