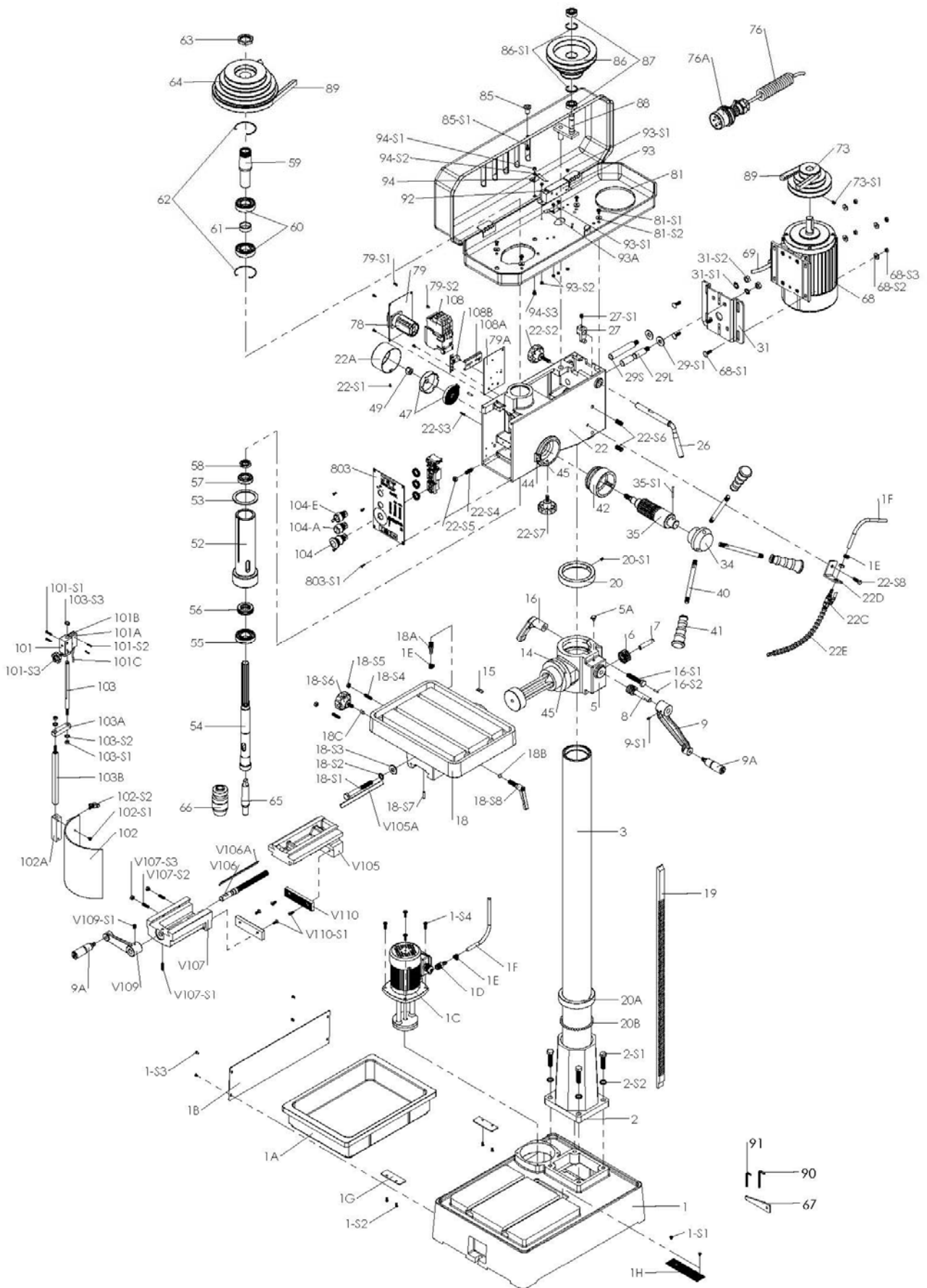


# ONDERDEELTEKENING

## DC3218P



## DC3218P

1	BASE
1A	WATER TANK
1B	BASE COVER
1C	PUMP MOTOR 400V
1D	ADAPTER
1E	CLAMP
1F	HOSE
1G	WATER TANK COVER
1H	HOSE COVER
1-S1	SCREW
1-S2	SCREW
1-S3	SCREW
1-S4	SCREW
2	COLUMN HOLDER
2-S1	BOLT
2-S2	SPRING WASHER
3	COLUMN
5	TABLE BRACKET
5A	OIL CUP
6	GEAR
7	GEAR BRACKET
8	WORM
9	TABLE HANDLE
9A	HANDLE BOLT
9-S1	SET SCREW
14	ANGLE SCALE
15	SCALE
16	CLAMP HANDLE
16-S1	CLAMP BOLT
16-S2	PIN
18	TABLE
18A	ADAPTER
18B	BUSH
18C	BUSH
18-S1	BOLT
18-S2	SPRING WASHER
18-S3	WASHER
18-S4	SET SCREW
18-S5	NUT
18-S6	LEAD BOLT
18-S7	PIN
18-S8	SWIVEL HANDLE
19	RACK
20	RACK RING
20A	COLUMN RING
20B	BALL
20-S1	SET SCREW
22	HEAD BODY
22A	FEED SHIFT COVER
22C	VALVE
22D	FIXING PLATE
22E	NOZZLE
22-S1	SCREW
22-S2	LEAD BOLT
22-S3	PIN
22-S4	SET SCREW
22-S5	NUT
22-S6	SET SCREW
22-S7	LEAD BOLT
22-S8	HEX BOLT
26	SHIFTER BAR
27	SHIFTER
27-S1	SET SCREW
29L	SLIDE BAR (L)
29S	SLIDE BAR (S)
29-S1	WASHER
31	MOTOR BASE
31-S1	SPRING WASHER
31-S2	NUT

34	HANDLE BODY
35	FEED SHAFT
35-S1	PIN
40	FEED HANDLE
41	GRIP
42	SCALE RING
44	ANGLE SCALE
45	RIVET
47	SPRING CAP
49	NUT
52	QUILL
53	RUBBER WASHER
54	SPINDLE
55	BALL BEARING
56	THRUST BEARING
57	BALL BEARING
58	SPINDLE NUT
59	SPINDLE SLEEVE
60	BALL BEARING
61	COLLAR
62	SNAP RING
63	PULLEY NUT
64	SPINDLE PULLEY
64-S1	PIN
65	TAPER ARBOR
66	DRILL CHUCK
67	DRILL SHIFTER
68	MOTOR
68A	MOTOR COOLER PLATE (DC32VP)
68-S1	BOLT
68-S2	WASHER
68-S3	NUT
69	MOTOR WIRE
73	MOTOR PULLEY
73-S1	SET SCREW
76	WIRE
76A	WIRE PLUG
78	CAN SWITCH (FOR DC3218P)
78	CONTROL SWITCH (FOR DC32VP)
78A	RPM DISPLAY UNIT
78B	PROXIMITY SWITCH
78-S1	SCREW
78-S2	SCREW
79	SWITCH COVER
79A	SWITCH RETAINER PLATE
79B	RPM SWITCH RETAINER PLATE
79C	PROXIMITY SWITCH RETAINER PLATE
79D	TRANSFORMER BOX
79-S1	SCREW
79-S2	SCREW
79-S3	WASHER
79-S4	SCREW
79-S5	SCREW
79-S6	SCREW
81	PULLEY COVER
81-S1	SCREW
81-S2	WASHER
85	PULLEY COVER KNOB
85-S1	PULLEY COVER SCREW
86	Transmitting Pulley
86-S1	SNAP RING
87	BALL BEARING
88	PULLEY SHAFT
89	V-BELT
90	HEX WRENCH
91	HEX WRENCH
92	MICRO SWITCH
93	MICRO SWITCH BOX
93A	SPRING SHEET
93-S1	SCREW

93-S2	NUT
94	CLUTCH
94-S1	NUT
94-S2	SPRING WASHER
94-S3	SCREW
101	MICRO SWITCH BRACKET
101A	MICRO SWITCH
101B	MICRO SWITCH BOARD COVER
101C	MICRO SWITCH WIRE
101-S1	SCREW
101-S2	SCREW
101-S3	LEAD BOLT
102	SAFETY GUARD
102A	SAFETY GUARD SLIDE
102-S1	SCREW
102-S2	LEAD BOLT
103	BRACKET ROD
103A	SUPPORT ARM
103B	LOWER BRACKET ROD
103-S1	HEX NUT
103-S2	SPRING WASHER
103-S3	C-RING
104	EMERGENCY STOP SWITCH
104-A	ON SWITCH
104-B	SPEED ADJUSTING KNOB
104-E	CHANGE SWITCH
104-F	OFF SWITCH
108	MAGNETIC SWITCH
108A	BAKELITE SHEET
108B	GROUNDING
108C	FUSE SET SHAFT
108D	FUSE SET
108E	ASSIST SWITCH
108F	TRANSFORMER
108-S1	SCREW
108-S2	SCREW
V105	WISE BODY
V105A	SET SLIDER
V106	LEADSCREW
V106A	SET SLIDER
V107	MOVING STAND
V107-S1	SET SCREW
V107-S2	SET SCREW
V107-S3	NUT
V109	WISE HANDLE
V109-S1	SET SCREW
V110	MOUNT PIECE
V110-S1	SCREW
803	SWITCH COVER
803-S1	SCREW