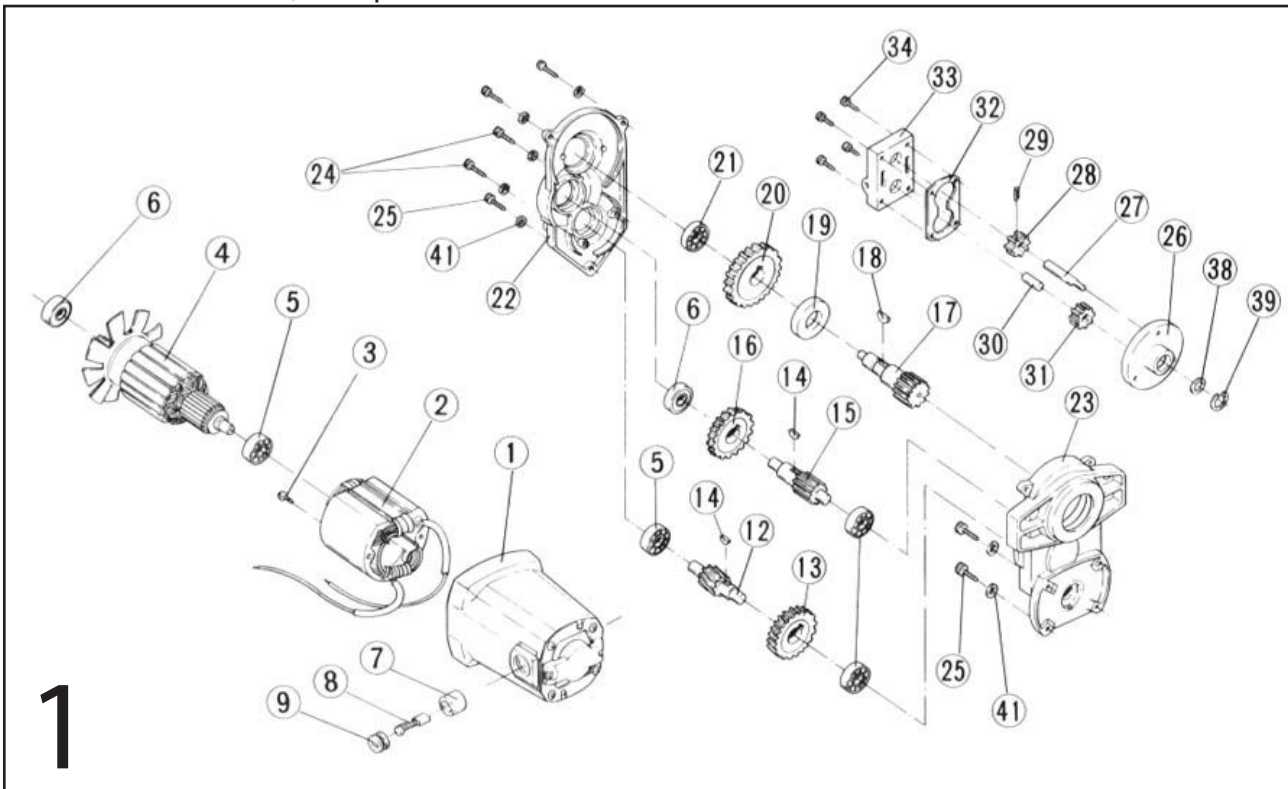
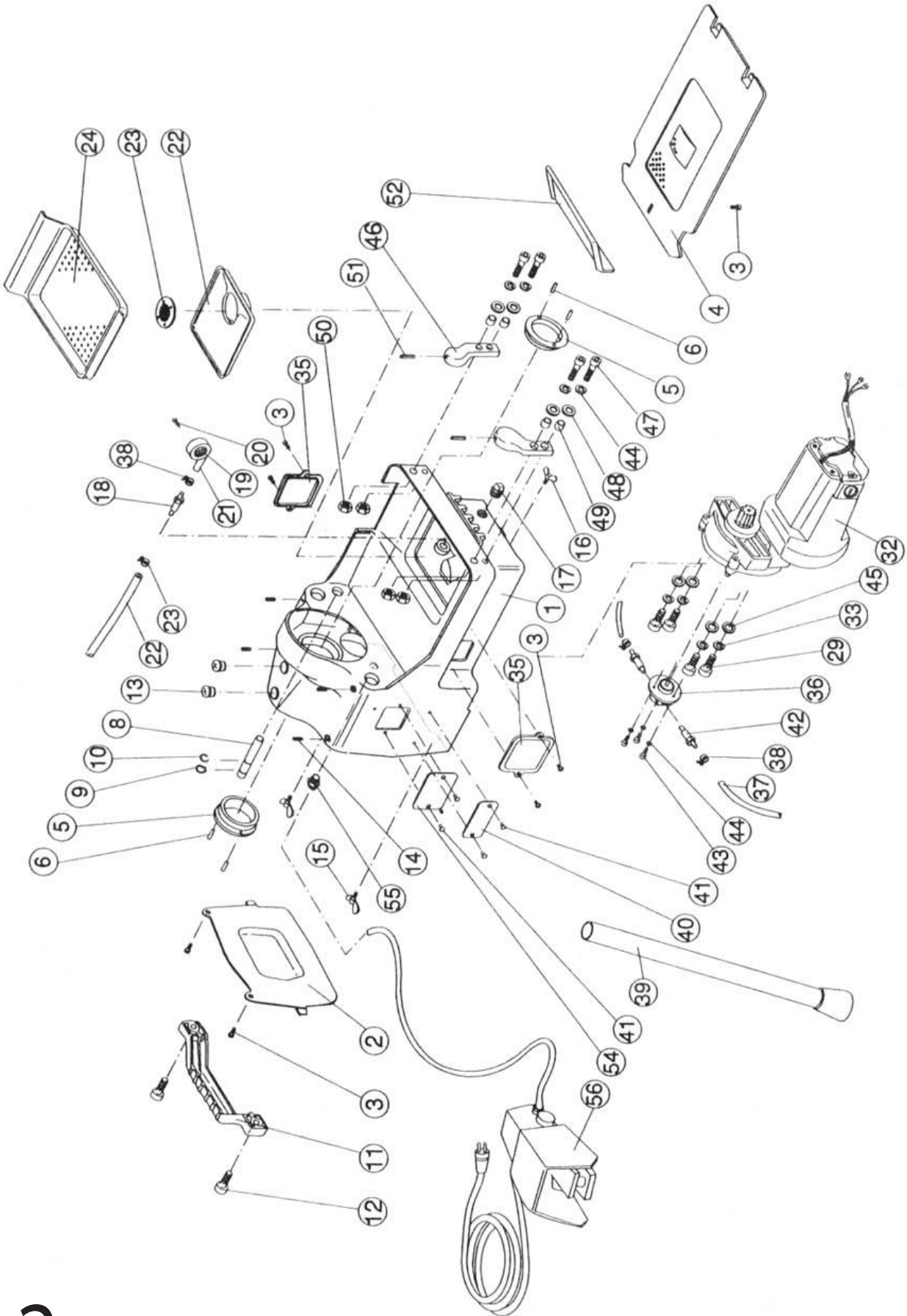


REX N50A (Motor, Pump)



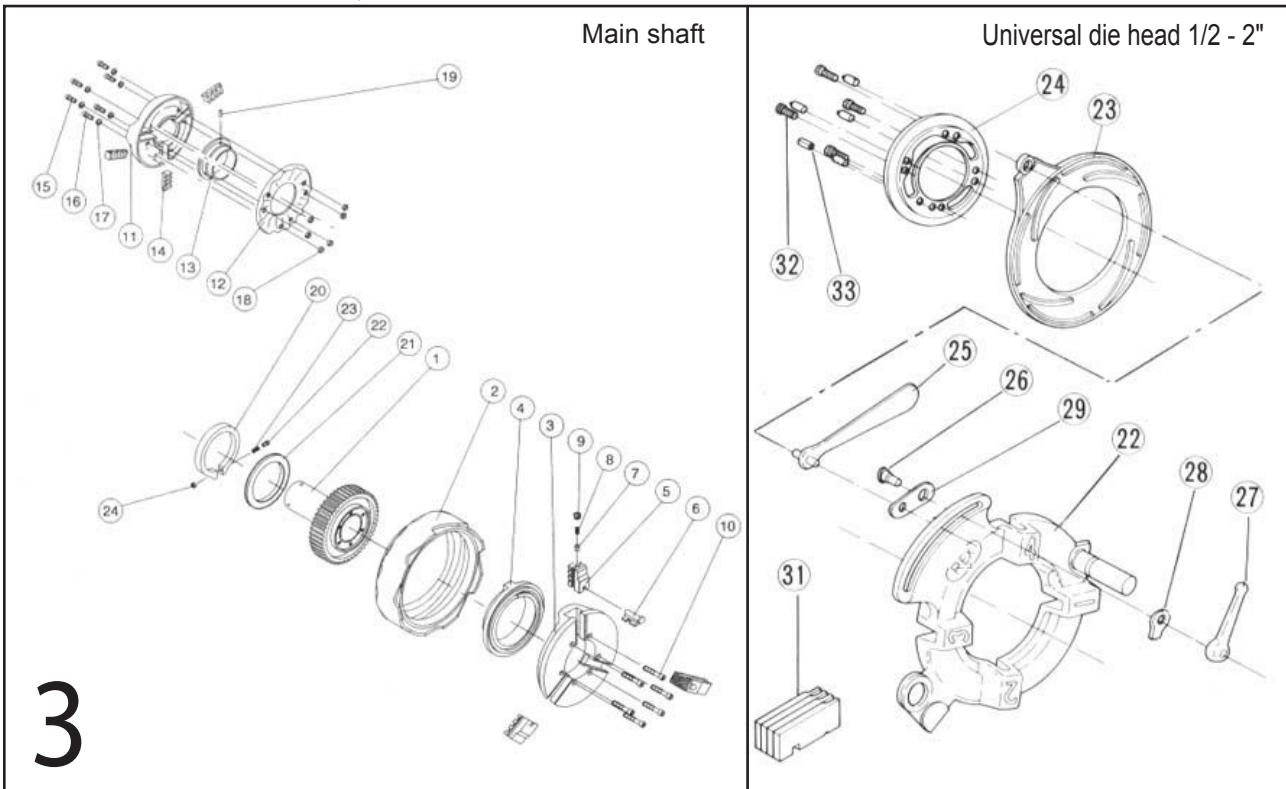
No.	Part No.	Part Name	Set		
1		Housing	1		
2	NM08	Stator assembly - 220V	1		
	NM05	Stator assembly - 100V	1		
3		Round head machine screw (M5×60)	1		
4	NM04	Armature assembly - 220V	1		
	NM01	Armature assembly - 100V	1		
5	S701	Bearing (#6200)	4		
6	I202	Bearing (#6201ZZ)	2		
7	NM16	Carbon brush holder for 100V/220V	2		
8	NM10	Carbon brush (auto-stop) for 100V/220V	1set		
9	NM17	Carbon brush cap for 100V/220V	2		
12		Second pinyon	1	} Set	
13		First gear	1		
14					
15		Third pinyon	1		
16		Second gear	1		
17	NM24	Spindle	1		
18	7M30	Woodruff key (M4×16)	1		
19	NM23	Bearing (#6304ZZ)	1		
20		Final gear M321-2C	1		
	I202	Final gear M319-5	1		
21		Bearing (#6201)	1		
22		Gear cover	1		
23		Inner cover	1		
24		Round head machine screw (M5×65)	2		
25		Round head machine screw (M5×25)	5		
26		Pump body	1		
27		Shaft	1		
28		Pump gear A	1	} Set	
29		Roll pin (φ2.5×6)	1		
30		Pin	1		
31		Pump gear B	1		
32		Gasket	1		
33		Rear cover	1		
34		Socket head cap screw (M5×25)	4		
38		Oil seal (AC0158A)	1		
39		Retaining ring (φ22)	1		
41		Spring washer (M5)	7		
42					
43					
44	NM14	Internal wire assembly			
45		Stop plate			



REX N50A (Base)

No.	Part No.	Part Name	Set	
1	N090	Base casting assembly	1	Set / G004 Gear cover
2	N035	Rear cover	1	
3		Round head machine screw (M5×10)	7	
4	N086	Bottom cover	1	
5	4005	Main shaft bearing	2	
6		Roll pin (M4×10)	4	
7				
8	N084	Hose cover	1	
9		Snap ring (out side 16)	1	
10				
11	N038	Rear grip	1	
12		Socket head cap screw (M8×25)	2	
13	N039	Oil cap	2	
14		Hex-socket set screw (M8×10)	4	
15	N128	Wing screw (M8×25)	2	
16	N127	Wing screw (M8×45)	1	
17	WA46	Drain plug (PT 1/2")	1	
18	T056	Nipple	1	
19	N048	Strainer	1	Set Tapping screw (M5×8)
20		Round head tapping screw (M6×8)	1	
21	N049	Oil intake line suction tube A (55mm)	1	
22	N030	Tank upper cover	1	
23	N029	Oil filter	1	
24	N031	Scrap receiver	1	
25				
26				
27				
28				
29				
30				
31				
32	N109	Motor (Series motor-220V)	1	
	N009	Motor (Series motor-100V)	1	
33		Spring washer (φ8)	4	
34		Socket head cap screw (M8×45)	4	
35	N036	Side cover	2	set N126 Side cover label
36	9010	Gear pump	1	
37	N046	Oil intake line suction tube B	1	
38		Pipe band S (10mm)	3	
39	N121	Pipe stand	3	set N125 Leg cap
40		Name plate for CE	1	
41		Rivet	1	
42	1035	Joint (#4×5)	2	
43		Socket head cap screw (M6×16)	2	
44		Spring washer (φ6)	3	
45		Washer (φ8)	7	
46	N013	Support	4	
47		Socket head cap screw (M6×30)	2	
48		Washer (φ6)	4	
49	N057	Support collar	4	
50		Nut (M6)	4	
51		Roll pin (φ6×12)	4	
52	N033	Oil pan	2	
53	N054	Cap	1	
54		Warning plate	1	
55	FSW1	Foot switch	1	with Cord bush
56				
57				
58				
59				
60				
61				
62				
63				
64				

REX N50A (Main shaft, Universal die head 1/2 - 2")

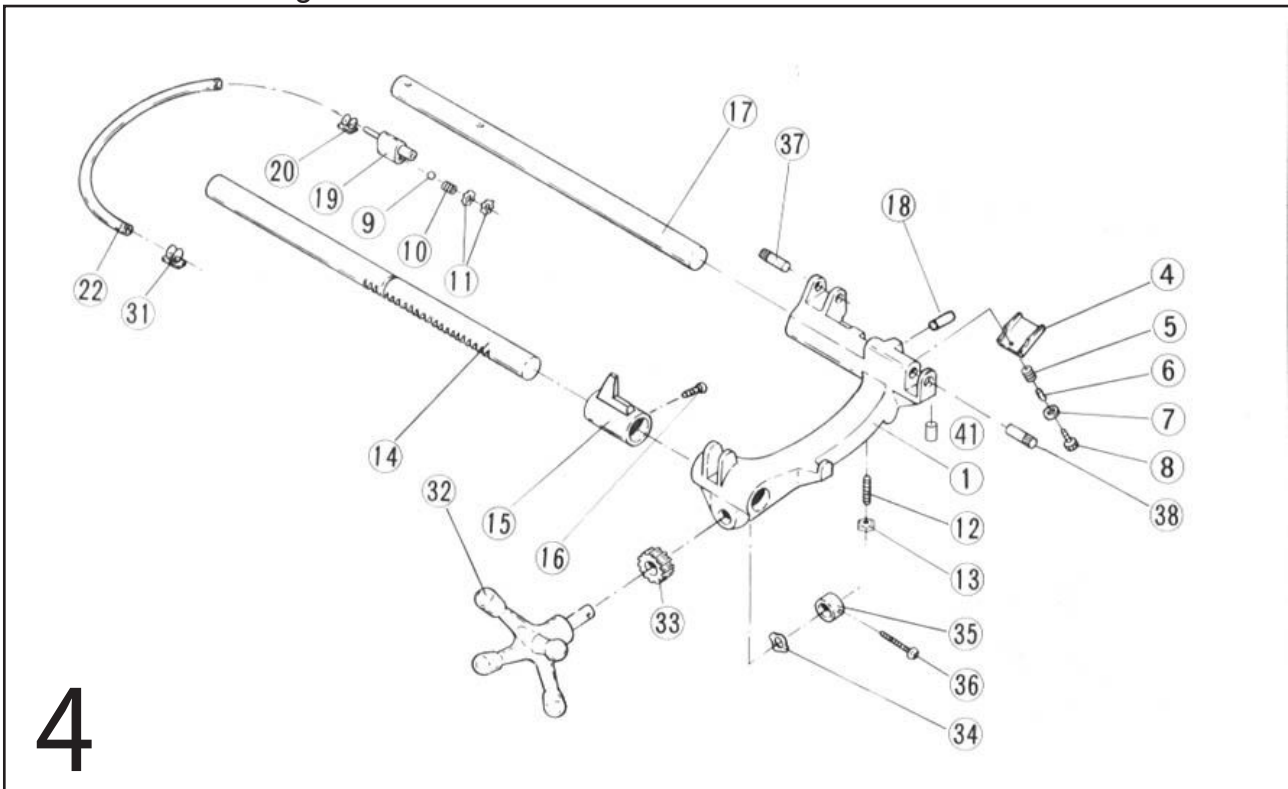


3

No.	Part No.	Part Name	Set		
Main shaft					
1	02N4	Main shaft	1	02N4 Set N103 Main shaft gear, Roll pins	
2	N080	Head wheel	1		
3		Chuck body	1	N0CJS Chuck jaw KS set } Chuck jaw insert set KS type 70KS } N006 Chuck complete set S type (No.3~10)	
4		Chuck scroll	1		
5		Chuck jaw set (No.6~10)	3		
6		Chuck jaw insert set (No.7~10)	3		
7		Spring retainer	3		
8		Spring	3		
9		Set screw (M7×7)	3		
10		Socket head cap screw (M7×54)	6		
11		Rear chuck receptacle	1		Set N085 Rear chuck complete set (No.11~18)
12		Rear scroll	1		
13		Rear chuck cover	1		
14	N0SS	Rear chuck jaw	3		
15		Reamer screw (M5×15)	2		
16		Round head machine screw (M5×15)	4		
17		Spring washer (φ5)	6		
18		Nut (M5)	6		
19	1036	Joint pin	3		
20	G082	Self adjusting thrust ring	1		
21	G083	Thrust ring	1		
22		Socket head cap screw (M6×55)	1		
23		Spring	1		
24		U nut	1		
25					

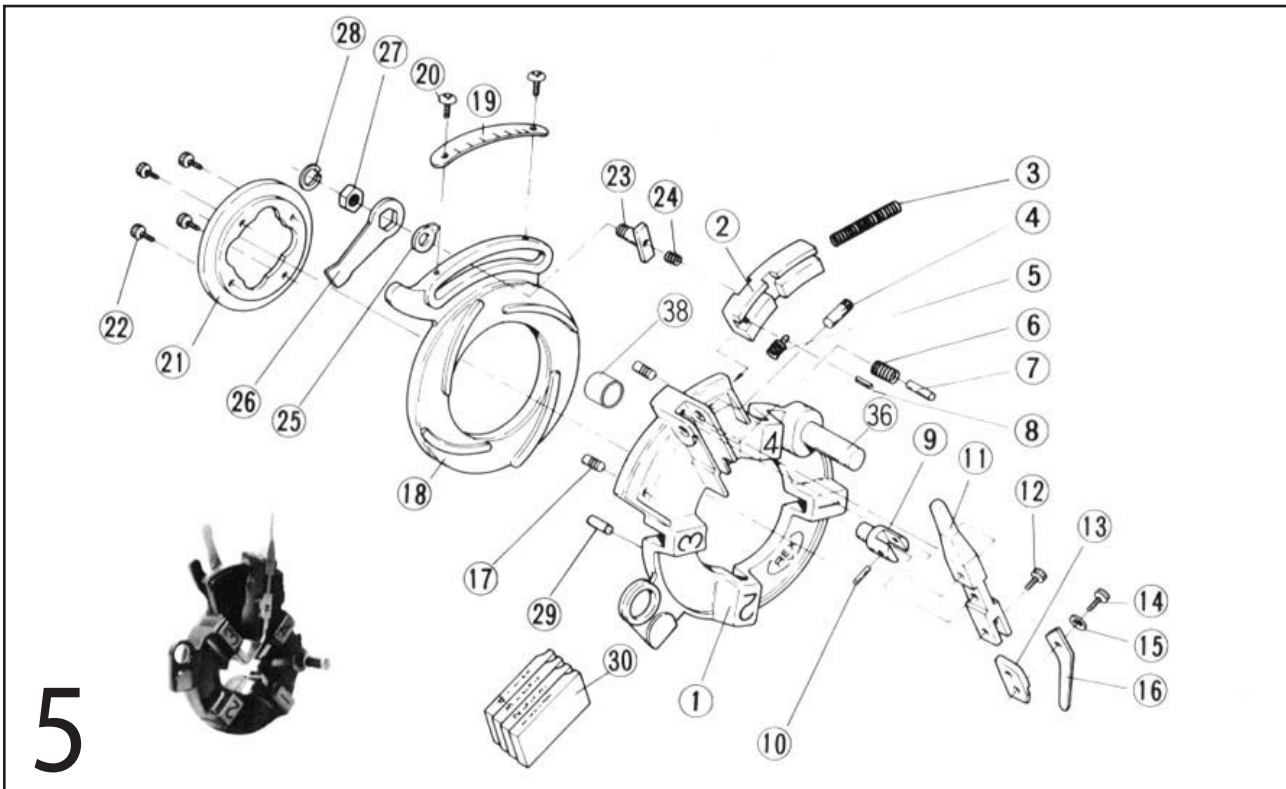
Universal die head 1/2 - 2"				
22	2322	Universal die head body	1	Set 7713 Die head post
23	2341	Cam plate	1	
24	2352	Universal retaining ring	1	Set G865 Dies notch
25	2361	Eccentric handle	1	
26	2386	Eccentric screw	1	
27	2377	Lever nut	1	
28	2381	Eccentric washer	1	
29	2371	Eccentric link	1	
30				
31	161907	Dies (1/2~3/4")	1set	
	16K030	Dies (1"~2")	1set	
32		Socket head cap screw (M6×16)	4	
33		Roll pin (φ6×14)	1	
34				
35				
36				
37				
38				

REX N50A (Carriage)



No.	Part No.	Part Name	Set	
1	N010	Carriage	1	Set N051 Oil cap
2				
3				
4	N032	Oil drip cover (out side 10)	1	
5	N370	Spring (P7)	1	
6	9056	Collar (8)	1	
7		Washer	1	
8		Socket head cap screw (M10)	1	
9		Steel ball (8×10)	1	
10	T050	Spring	1	
11		Push nut (12mm)	2	
12		Hex-socket set screw (cone M6×15)	1	
13		Jam nut (M6)	1	
14	N011	Carriage support bar A (out side 19)	1	
15	N081	Security collar (20)	1	
16				
17	N012	Carriage support bar B	1	
18	G861	Notch	1	
19	N044	Oil tube connector	1	
20		Pipe band S	1	
21		(M5×10)		
22	N047	Oil feed line tube	1	
23				
24				
25				
26				
27				
28				
29				
30				
31		Pipe band S	1	
32	N014	Carriage handle	1	Set N015 Feed gear shaft
33	A515	Carriage feed gear	1	
34		Wave washer	1	
35	9018	Feed gear stop ring	1	
36		Round head machine screw	1	
37	1076	Cutter arm stop pin	1	
38	1096	Reamer arm stop pin	1	
39				
40	N051	Oil cap	1	
41				
42				
43				

REX N50A (Uni-auto V die head 1/2 - 2")



No.	Part No.	Part Name	Set	
1	N 701	Die head body	1	Set N714 Die head post, N710 Auto-open pin collar
2	N 704	Opening block	1	
3	7697	Spring	1	
4	N 714	Lever pin	1	
5	N 720	Spring	1	
6	N 718	Spring	1	
7	N 708	Spring guide	1	
8		Roll pin (φ6×16)	1	
9	N 709	Auto-open pin	1	
10	N 716	Straight pin	1	
11	N 711	Open lever	1	
12		Socket head cap screw (M8×16)	1	
13	N 732	Auto-open pin	1	
14		Socket head cap screw (M8×10)	1	
15		Washer	1	
16	N 713	Auto-open lever C	1	
17	N 717	Stop screw (φ8)	2	
18	N 702	Cam plate	1	
19	N 721	Size plate	1	
20		Truss screw (M4×5)	2	
21	N 703	Retaining ring	1	Set G865 Die notch
22		Socket head cap screw (M6×16)	4	
23	N 706	Cam plate fixed pin	1	
24	N 722	Spring	1	
25		Eccentric washer	1	
26	N 705	Lever pin	1	
27	N 707	Nut	1	
28		Snap ring (φ20)	1	
29		Roll pin (φ5×14)	1	
30	161907	Dies (BSPT 27mm, Alloy) (1/2~3/4")	1set	
	16K030	Dies (BSPT 27mm, Alloy) (1~2")	1set	
31				
32				
33	292420	Complete die head Uni-auto V	1	
34				
35				
36	7713	Die head post	1	
37				
38	N 710	Auto-open pin collar	1	
39				
40				
41				
42				

