

CE

**S80AV · S80A**

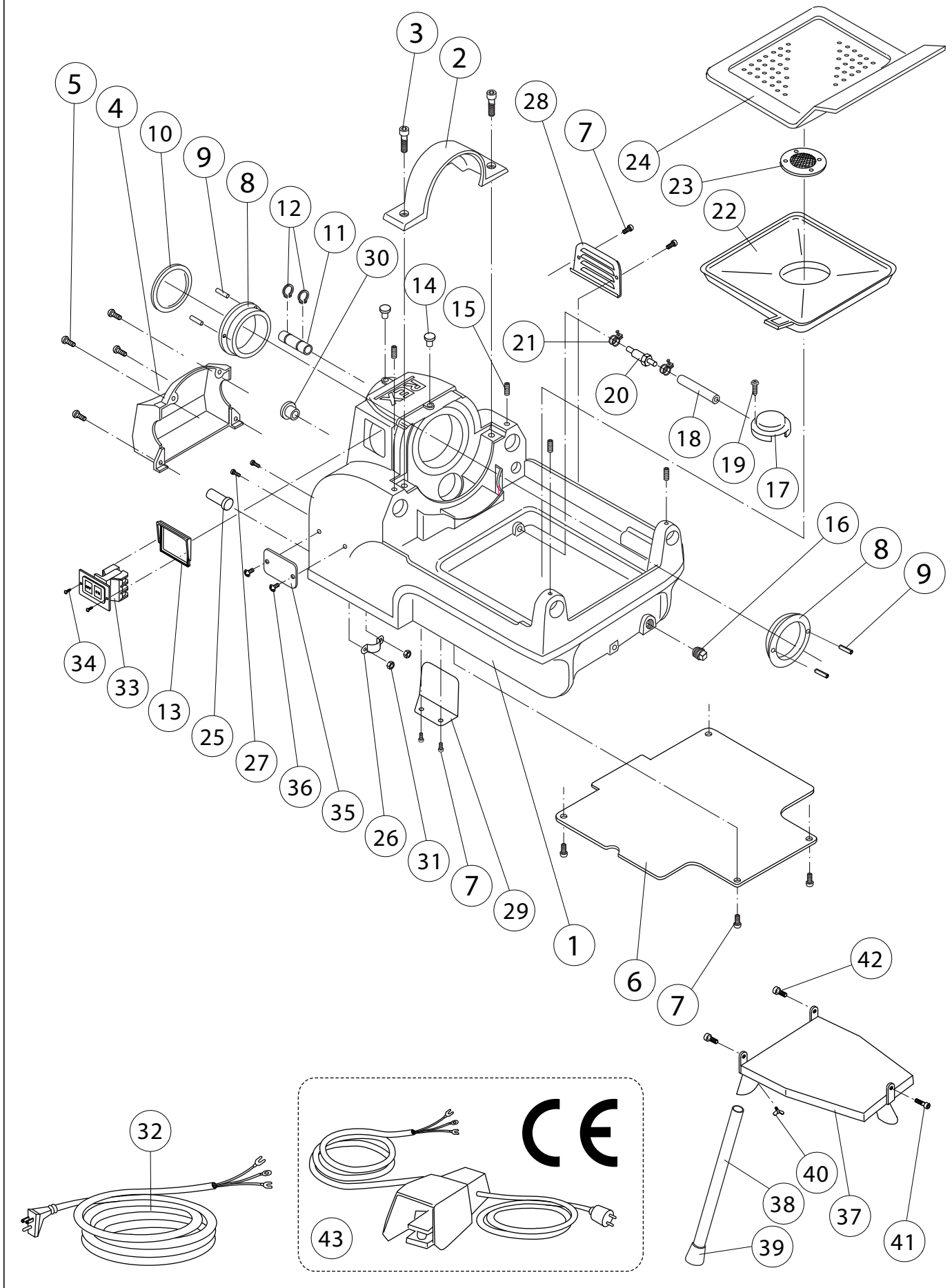
PIPE THREADING MACHINE

**Parts List**

**REX**

# S80A

## 1. Base



**REX S80A**

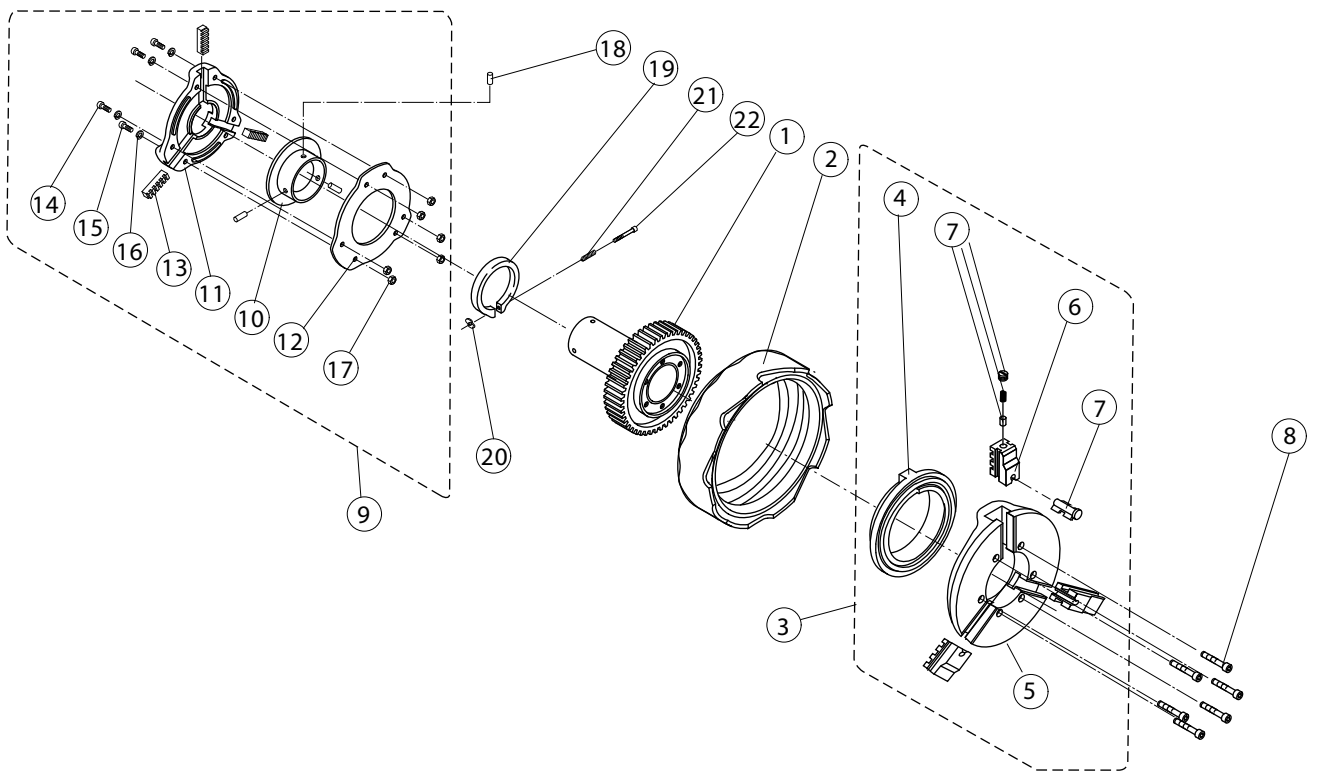
2009/6/17

1 . Base

No.	Part No.	Part Name	Set	Reference
1	F091	Base casting assembly	1	
2	F092	Gear cover for base casting assembly	1	
3	W181	Socket head cap screw (M8X20)	2	N80A
4	F093	Rear cover	1	
5	W062	Socket head cap screw (M6X16)	4	N80A
6	F095	Bottom cover	1	
7	W251	Round head machine screw (M5X8)	6	N80A
8	4905	Main shaft bearing	2	N80A
9	WL41	Roll pin (4X10)	4	N80A
10	F009	Thrust ring	1	N80A
11	F022	Oil tube cover	1	N80A
12	WW16	Snap ring (out side 16)	1	N80A
13	N041	Switch fixed plate	1	N80A
14	N039	Oil cap	2	N80A
15	W68A	Hex-socket set screw (cone M8X14)	4	N80A
16	WA48	Drain plug (R1)	1	N80A
17	4047	Strainer	1	N80A N80ADX
18	0410	Oil intake line suction tube A (100mm)	1	N80A
19	WA55	Round head tapping screw (M5X8)	1	N80A N80ADX
20	T056	Nipple	1	N80A
21	ZJ50	Pipe band S (10mm)	2	N80A
22	F018	Tank upper cover	1	N80A
23	N029	Oil filter	1	N80A
24	F016	Scrap receiver	1	N80A
25	7021	Cord bushing	1	N80A 80ADX
26	7099	Clamp	1	
27	W245	Round head tapping screw (M4X20)	2	
28	F096	Side cover	1	
29	F100	Cover	1	
30	F027	Cap	1	N80A
31	WC04	Nut (M4)	2	
32	N122	Capyre cord	1	N80A
33	N008	Switch	1	N80A
34	W4A4	Oval head machine screw (M4X12)	2	N80A
35	F118	Name plate	1	
36	WN34	Rivet (#4X5)	2	N80A
37	F099	Stand base (for S80A)	1	
38	N121	Pipe stand	3	N80A
39	N125	Leg cap	3	N80A
40	WA61	Wing screw (M8X15)	3	N80A
41	W08G	Socket head cap screw (M8X40)	1	N80A
42	W080	Socket head cap screw (M8X15)	2	
43	FSW1	Foot switch (CE)	1	N80A

S 80A

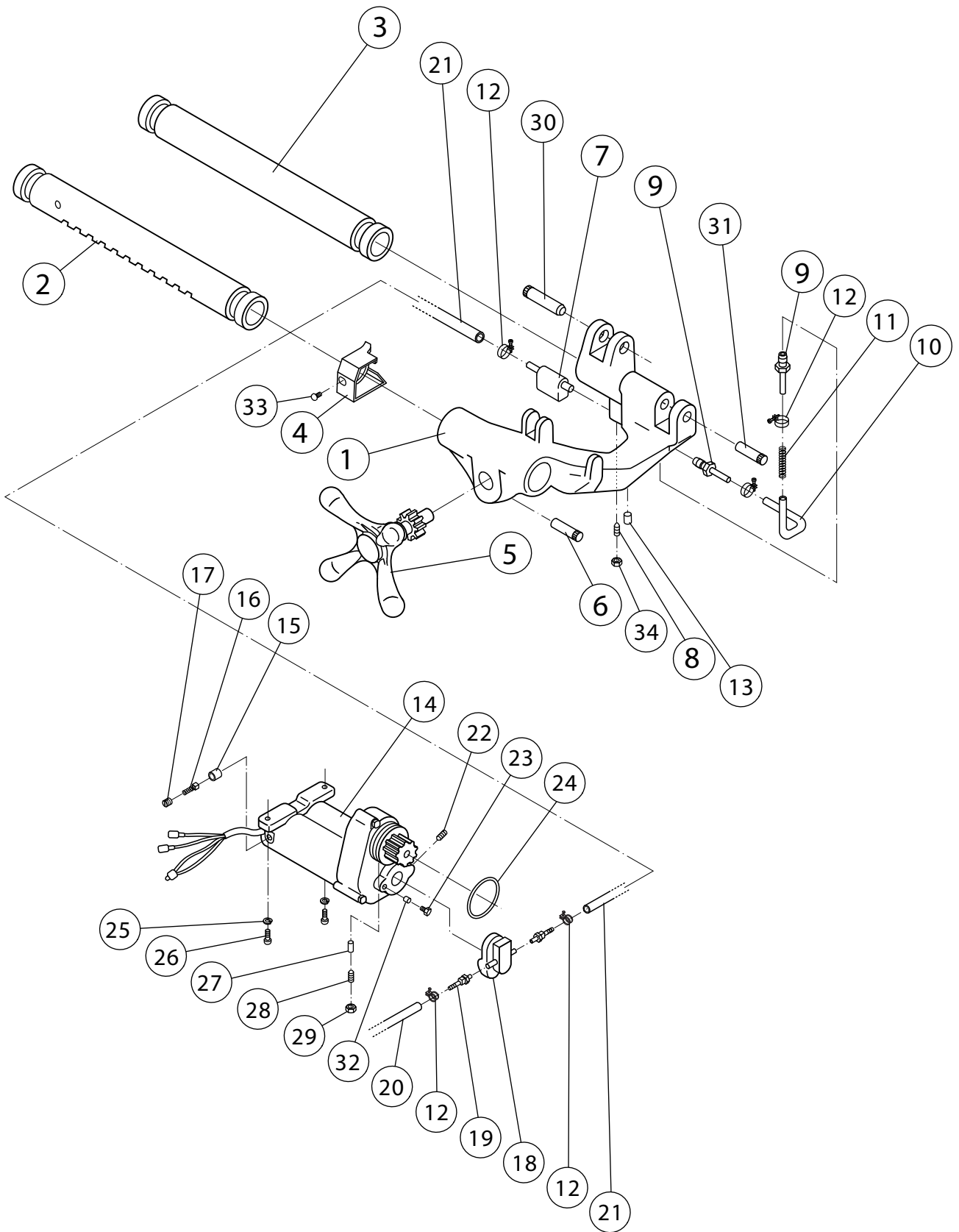
## 2. Main shaft





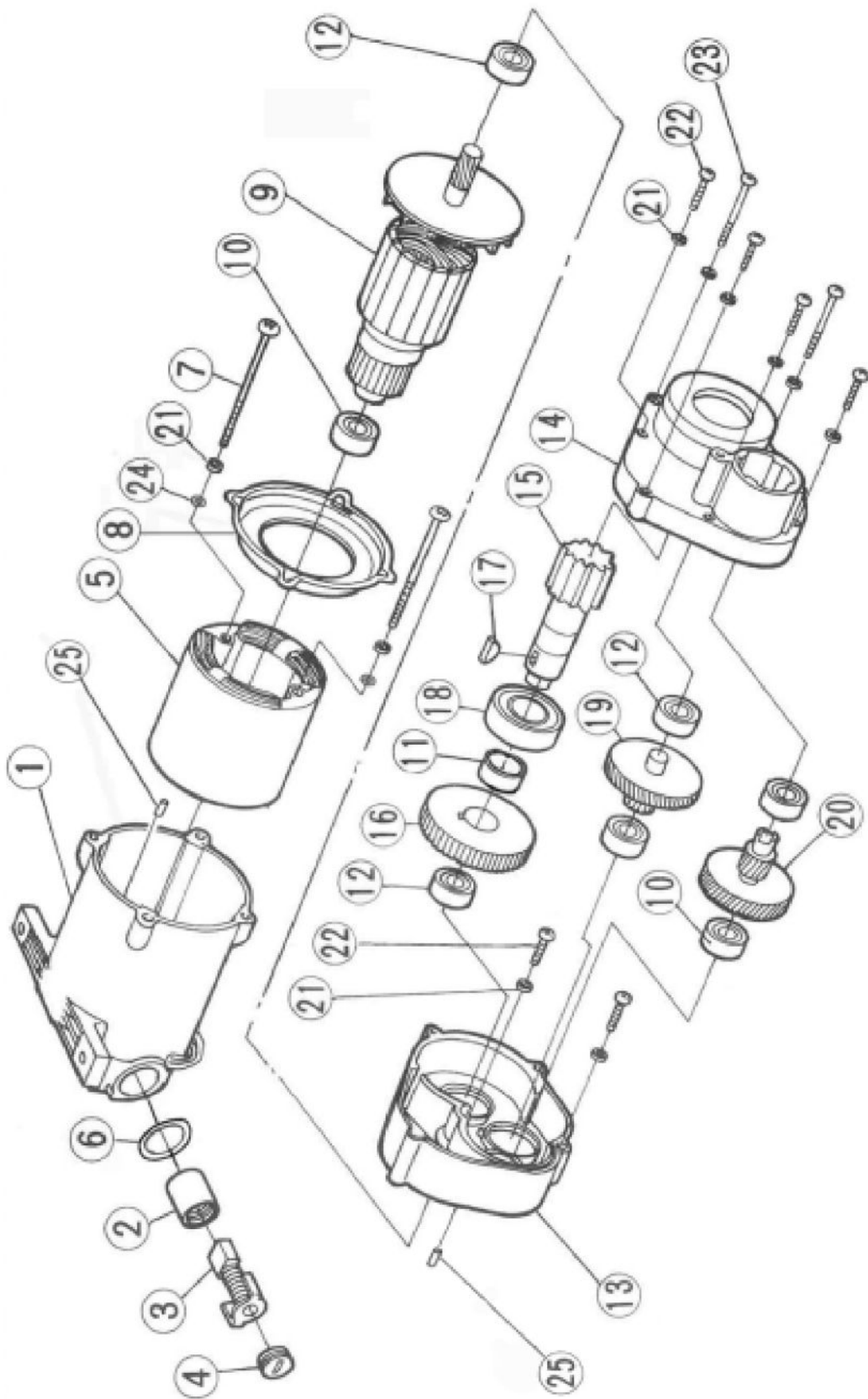
S 80A

### 3. Carriage, Motor





S80A



4. MOTOR

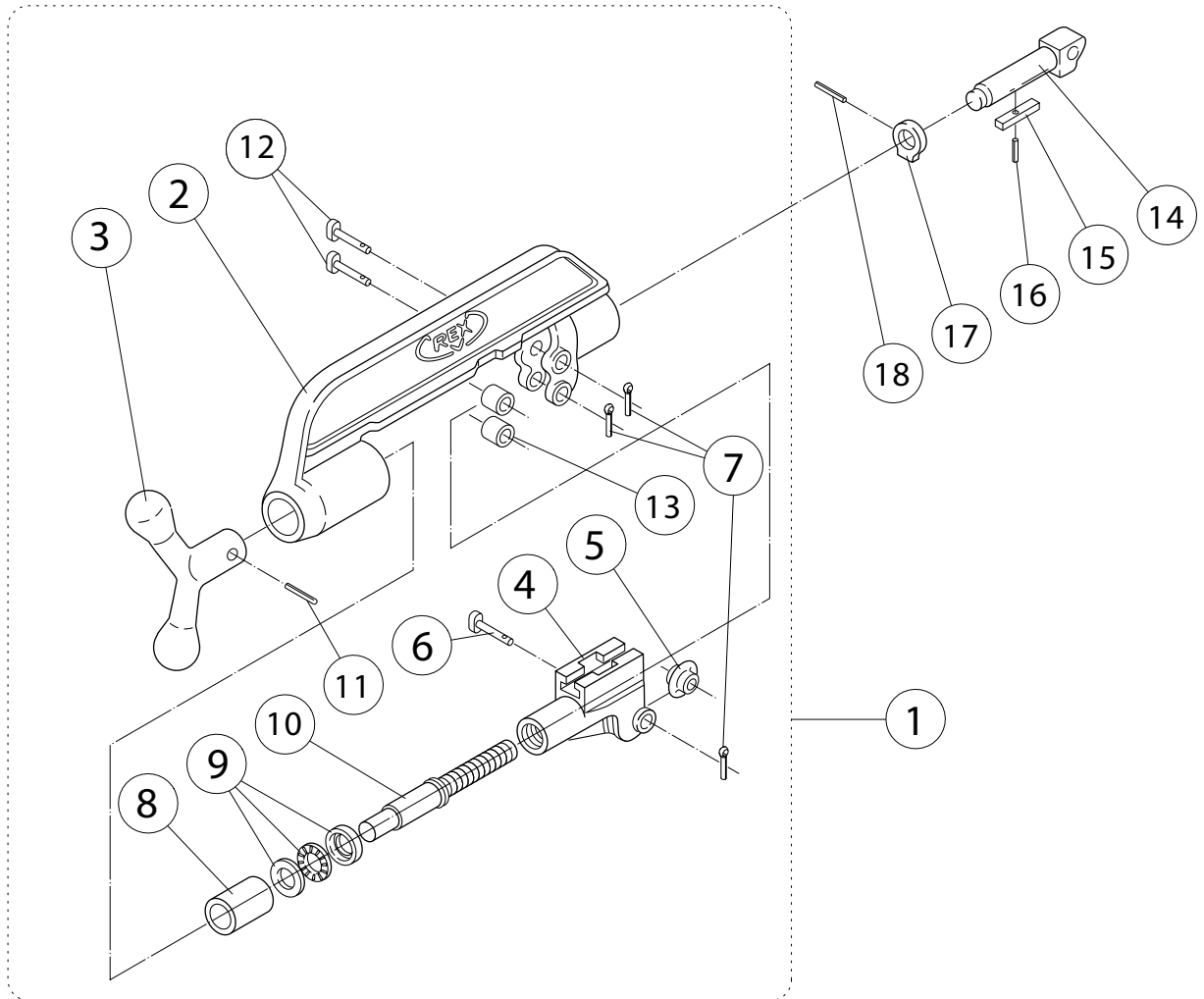


**REX S80A****4. Motor**

No.	Part No.	Part Name	Set	Reference
1	FM25T	Housing	1	
2	FM16	Carbon brush holder	2	
3	FM10	Carbon brush (auto-stop)	1 set	N80A
4	FM17	Carbon brush cap	2	
5	FM05T	Stator assembly 100V (for F061T, F068T)	1	(for F061T, F068T)
5	FM08T	Stator assembly 220V (for F062T, F067T)	1	(for F062T, F067T)
6	FM41	Fiber washer	2	
7		Round head machine screw (M5x75)	2	N80A
8	FM42T	Fan guide (with fiber sheet)	1	
9	FM01T	Armature assembly 100V	1	(for F061T)
9	FM04T	Armature assembly 220V	1	(for F062T)
9	FM01R	Armature assembly 100V	1	(for F068T Reverse Rotation)
9	FM04R	Armature assembly 220V	1	(for F067T Reverse Rotation)
10	S701	Bearing (#6200ZZ)	2	N80A
11	FM43	Spacer	1	
12	I202	Bearing (#6201ZZ)	5	N80A
13	FM28	Inner cover	1	
14	FM26	Gear cover	1	
15	FM24	Spindle	1	N80A
16	NM23	Final gear	1	N80A
17	FM46	Woodruff key	1	N80A
18	7M30	Bearing (#6304ZZ)	1	N80A
19	FM22	Third pinion gear assembly	1	N80A 80ADX
20	FM20	Second pinion gear assembly	1	
21	WG05	Spring washer (5mm)	10	
22		Round head machine screw (M5x25)	6	
23		Round head machine screw (M5x65)	2	
24		Toothed lock washer (5)	2	
25	FM47	Bearing lock	2	

S 80A

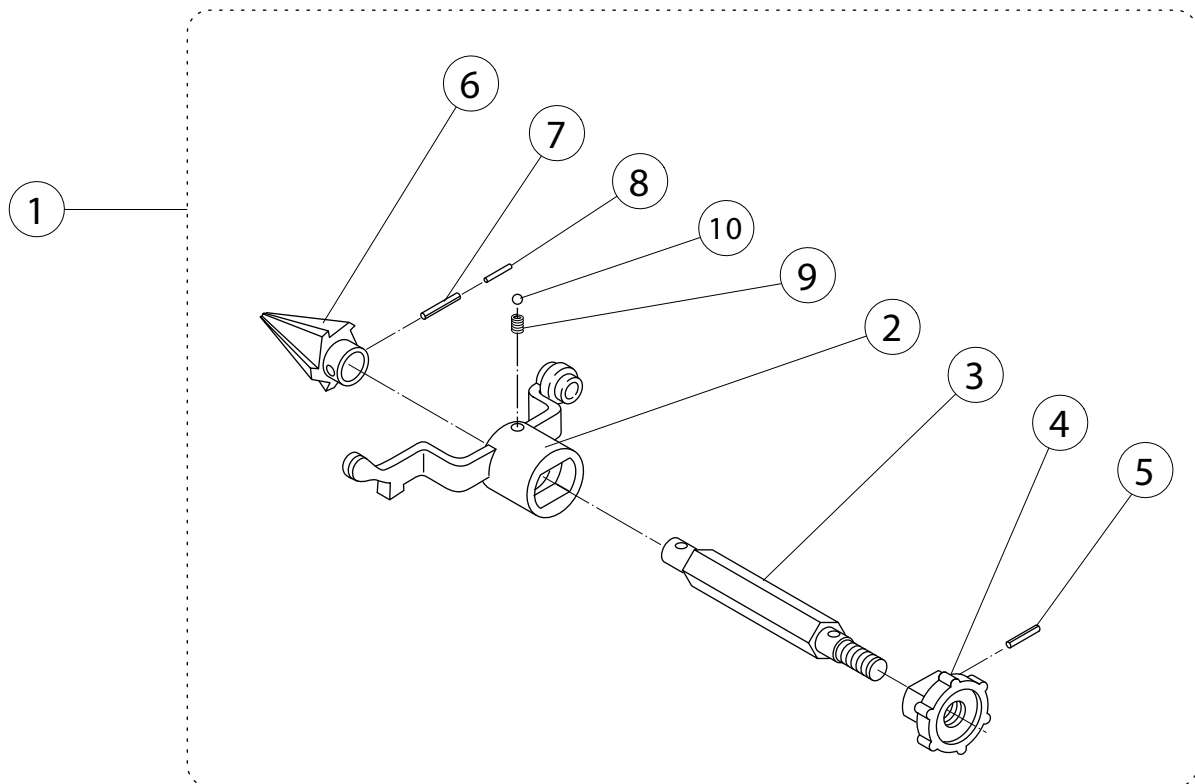
## 5. Cutter





S 80A

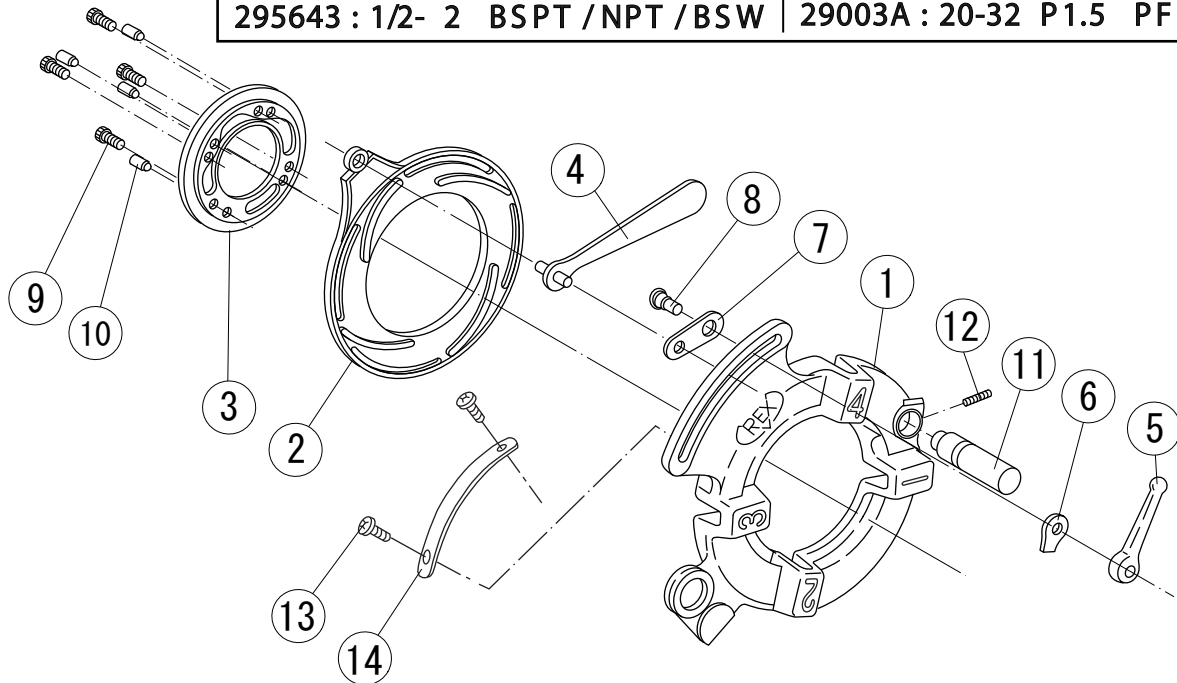
## 6. Reamer





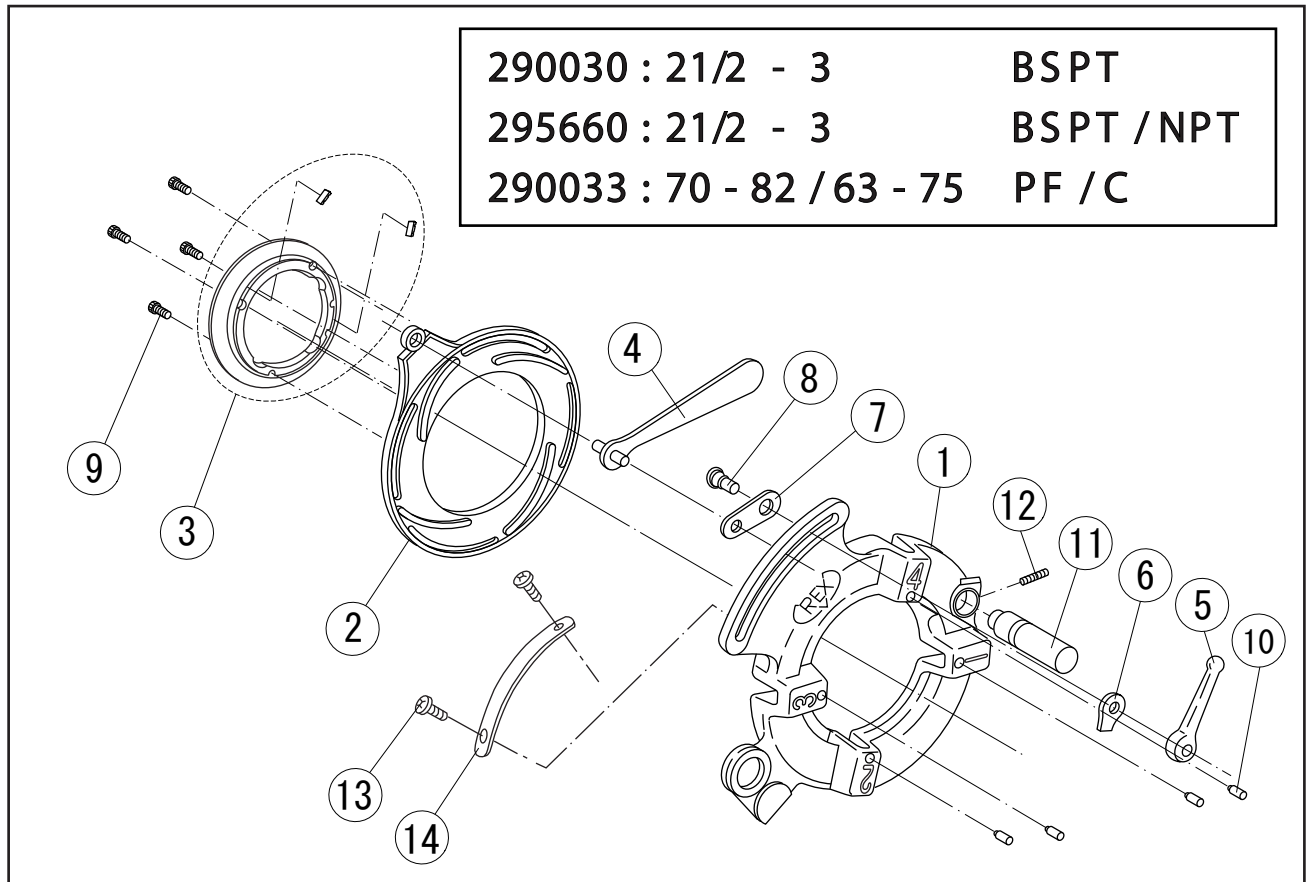
# Manual Open Die Head 1/2 - 2

290020 : 1 - 2 BSPT	295655 : 1/2- 2 NPT
295649 : 1/2- 2 BSPT	295656 : 1/2 - 2 NPSM
295652 : 1/2- 2 BSPT /NPT	290023 : 16-54 / 15-51 PF/C
295643 : 1/2- 2 BSPT /NPT /BSW	29003A : 20-32 P1.5 PF



No.	Part No.	Part Name	Remarks	Set
1	2322	Universal Die-head body (1/2"- 2")		1
2	2341	Cam plate (1/2"- 2")		1
3	N703	Universal Retaining ring		1
4	2361	Eccentric handle		1
5	2377	Lever nut		1
6	2381	Eccentric washer		1
7	2371	Eccentric link		1
8	2386	Eccentric screw		1
9	W062	Socket head cap screw	M6 × 16	4
10	G860	Dies notch		4
11	7009	Die head post		1
12	W661	Hex-socket head set screw	M6 × 6	1
13	W541	Truss screw	M4 × 5	2
14	L292	Size adjustment plate (BSPT : 1" - 2")	290020	1
	2904	Size adjustment plate (BSPT : 1/2"- 2")	295649	
	G892	Size adjustment plate (BSPT/NPT : 1/2"- 2")	295652	
	L291	Size adjustment plate (BSPT/NPT/BSW : 1/2"- 2")	295643	
	N740	Size adjustment plate (NPT : 1/2"- 2")	295655	
	L182	Size adjustment plate (NPSM : 1/2"- 2")	295656	
	G848	Size adjustment plate (PF/C : 16-54 / 15-51)	290023	
	L281	Size adjustment plate (PF : M20-32 P1.5)	29003A	

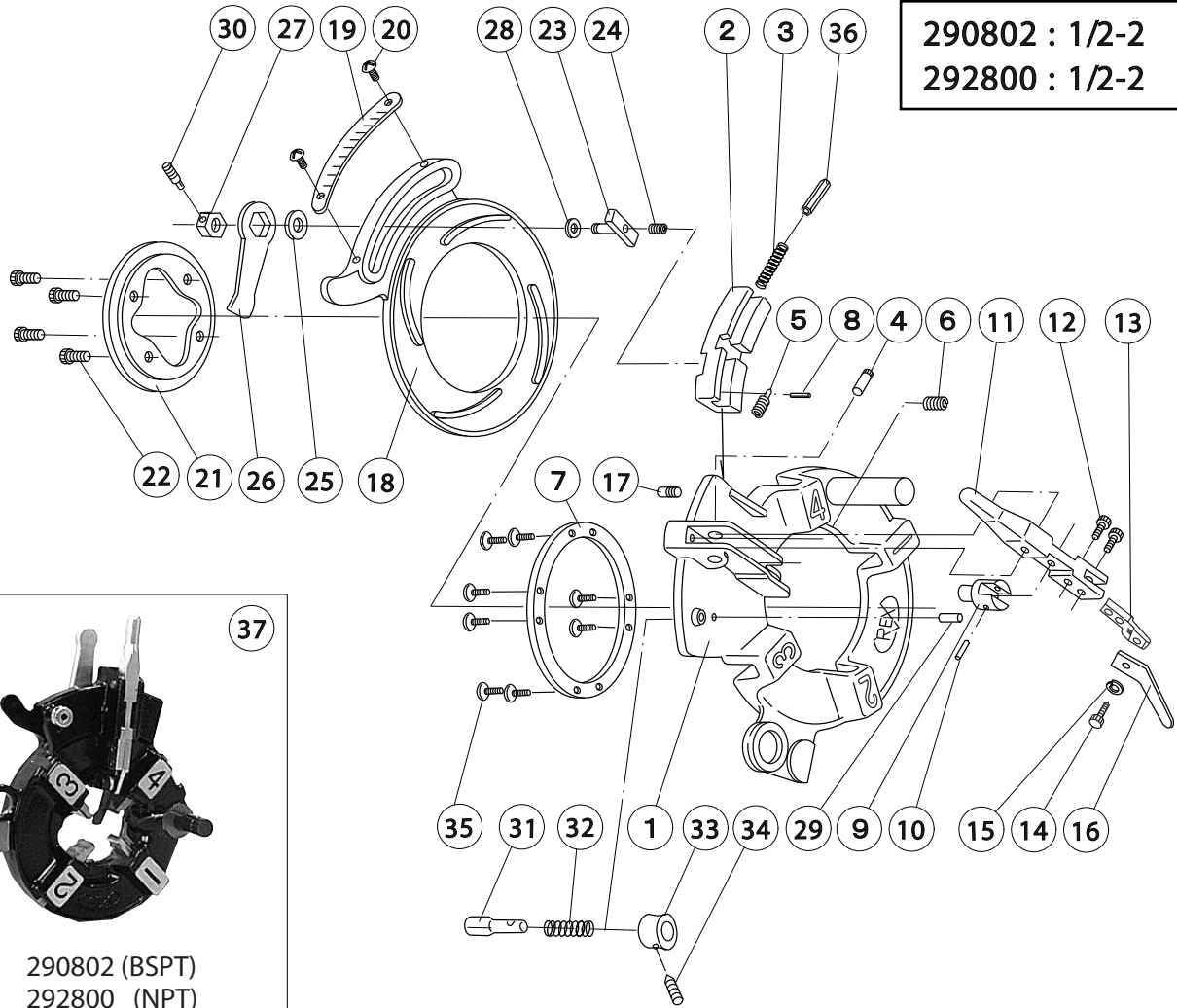
# Manual Open Die Head 2 1/2 - 3



No.	Part No.	Part Name	Remarks	Set
1	3324	Universal Die-head body (2 1/2" - 3")		1
2	3344	Cam plate (2 1/2" - 3")		1
3	3354	Universal Retaining ring with Oil stopper (No.3355 × 2)		1
4	2361	Eccentric handle		1
5	2377	Lever nut		1
6	2381	Eccentric washer		1
7	2371	Eccentric link		1
8	2386	Eccentric screw		1
9	W062	Socket head cap screw	M6 × 16	4
10	G860	Dies notch		4
11	7010	Die head post NO.3	D5.8	1
12	W661	Hex-socket head set screw	M6 × 6	1
13	W541	Truss screw	M4 × 5	2
14	L293	Size adjustment plate (BSPT : 2 1/2" - 3")	290030	1
	L181	Size adjustment plate (BSPT/NPT : 2 1/2" - 3")	295660	
	3330	Size adjustment plate (PF/C : 70 - 82 / 63 - 75)	290033	

# R 50AV Uni-auto V R-type Die Head 1/2 - 2

290802 : 1/2-2 BSPT  
292800 : 1/2-2 NPT



290802 (BSPT)  
292800 (NPT)

No.	Part No.	Part Name	Remarks	Set
1	N674	Die-head body	With die head post (N676) & auto-open pin roller(W662)	1
2	N681	Opening block		1
3	N694	Spring		1
4	N714	Lever pin		1
5	N720	Spring		1
6	N723	Spring		1
7	N682	Die-head ring		1
8	WM62	Pin	6 × 12	1
9	N709	Auto-open pin		1
10	N716	Straight pin		1
11	N683	Open lever		1
12	W060	Socket head cap screw	M6 × 10	2
13	N684	Auto-open link		1
14	W080	Socket head cap screw	M8 × 15	1
15	WG08	Spring washer	8mm	1
16	N697	Auto-open lever (BSPT)	(BSPT)	1
	N692	Auto-open lever (NPT)	(NPT)	
17	N717	Stop screw		1
18	N678	Cam plate		1
19	N696	Size plate (BSPT)	(BSPT)	1
	N677	Size plate (NPT)	(NPT)	
20	W541	Truss screw	M4 × 8	2

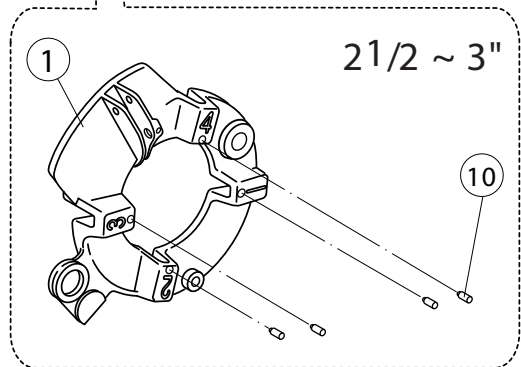
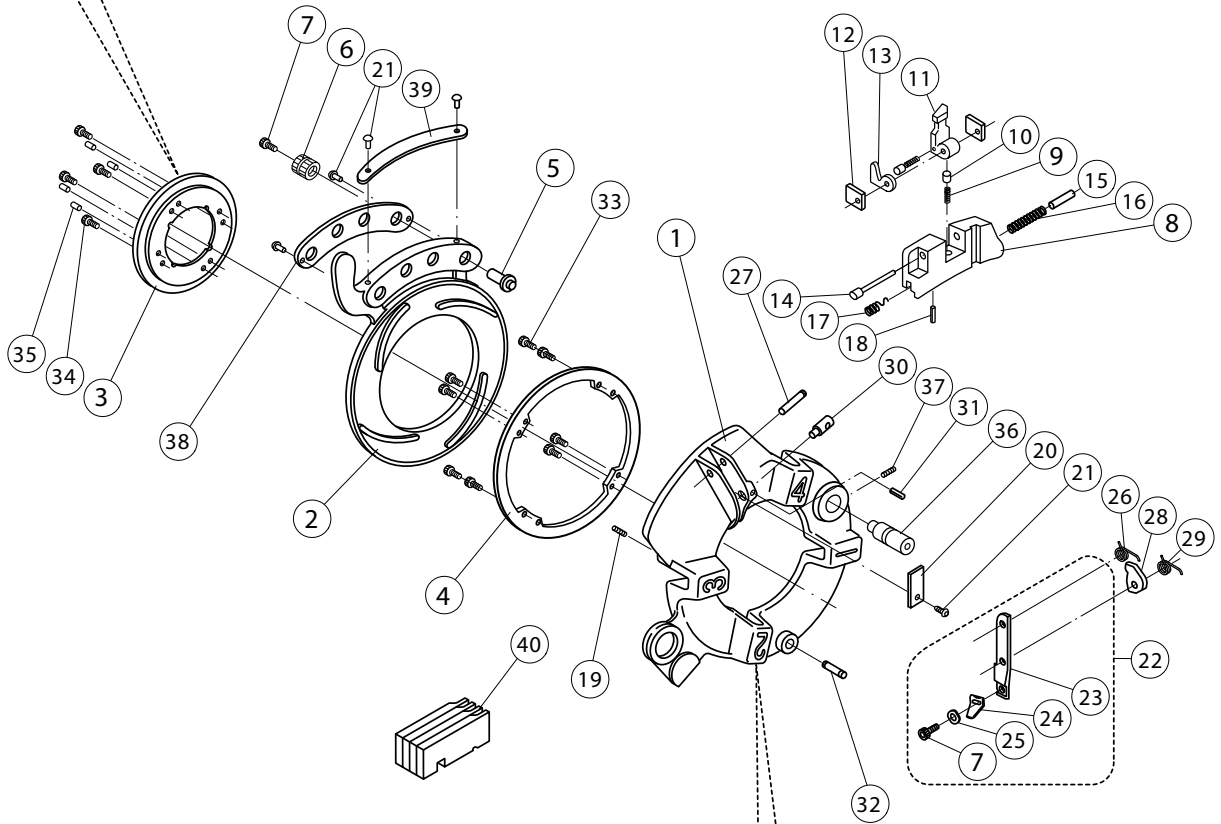
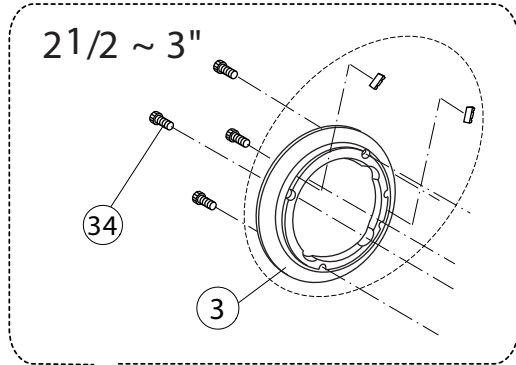
No.	Part No.	Part Name	Remarks	Set
21	N679	Retaining ring		1
22	W062	Socket head cap screw	M6 × 16	4
23	N685	Cam plate fixed pin		1
24	N722	Spring		1
25	N693	Washer	12mm	1
26	N691	Lever nut		1
27	N686	Nut		1
28	N693	Fixed pin washer		1
29	WL52	Roll pin	5 × 14	1
30	W856	Hex -socket set screw	M5 × 6	1
31	N688	Open pin		1
32	N690	Spring		1
33	N689	Knob		1
34	W650	Hex -socket set screw	M5 × 5	1
35	W04C	Socket head button screw	M4 × 10	8
36	7735C	Spring guide pin		1
37	290802	Complete die-head (BSPT)	(BSPT)	1SET
	292800	Complete die-head (NPT)	(NPT)	



# Auto Open Die Head for 1/2~3"

1/2~3/4", 1-2", 2 1/2-3"

292850 : 1/2~3/4"	BSPT / NPT
292020 : 1-2"	BSPT / NPT
292030 : 2 1/2~3"	BSPT



Self-opening die head 1/2~3"

No.	Part No.	Part Name	Set	Refference
1	7723	Die head body (1/2~3/4")	1	N80A
1	7721	Die head body (1~2")	1	N80A
1	7720	Die head body (21/2~3")	1	N80A
2	7727	Cam plate (1/2~3/4")	1	N80A
2	7725	Cam plate (1~2")	1	N80A
2	7724	Cam plate (21/2~3")	1	N80A
3	7729	Retaining ring (1/2~3/4")	1	N80A
3	N703	Retaining ring (1~2")	1	N80A
3	7728	Retaining ring (21/2~3")	1	N80A
4	7683	Die head ring (1/2~3/4")	1	N80A
4	7647	Die head ring (1~3")	1	N80A
5	7692	Crank pin	1	N80A
6	7693	Size adjustment knob	2(4)	N80A
7	W060	Socket head cap screw (M6X10)	3(5)	N80A
8	7741	Opening block (1/2~3/4") (1~2")	1	N80A
8	7740	Opening block (21/2~3")	1	N80A
9	7752	Spring	1 (2)	N80A
10	7790	Notch pin	1 (2)	N80A
11	7690	Size setting lever	1	N80A
12	7743	Size adjustment plate	2	N80A
13	7700	Pin stop plate (21/2~3")	1	N80A
14	7742	Retaining pin	1	N80A
15	7735	Spring guide	1	N80A
16	7697	Spring	1	N80A
17	7698	Spring	1	N80A
18	WL6E	Roll pin (6X22)	1	N80A
19	W785	Hex-socket set screw (M8 X18)	2	N80A
20	7758	Steel stop plate	1	N80A

-to be continued

## Self-opening die head 1/2~3"

No.	Part No.	Part Name	Set	Reference
21	WN34	Rivet (φ4X5)	5	N80A
22	G901	Auto-open lever set (1/2~3/4")	1 set	N80A
22	G902	Auto-open lever set (1~2")	1 set	N80A
22	G903	Auto-open lever set (21/2~3")	1 set	N80A
22	7796	Auto-open lever set (21/2~3")	1 set	N80A
24	7795	Auto-open lever (part C) (1/2~3/4")	1	N80A
24	7794	Auto-open lever (part C) (1~2")	1	N80A
24	7793	Auto-open lever (part C) (21/2~3")	1	N80A
24	779R	Auto-open lever (part C) (21/2~3")	1	N80A
25	WG06	Washer (6)	1	N80A
26	7696	Lever spring	1	N80A
27	N714	Lever pin	1	N80A
28	7753	Guide plate (1/2 ~3/4")	1	N80A
28	7736	Guide plate (1~2")	1	N80A
28	7755	Guide plate (21/2~3")	1	N80A
29	7739	Cam plate spring	1	N80A
30	7737	Guide plate pin L	1	N80A
31	WL42	Roll pin (4X12)	1	N80A
32	7689	Stop pin	1	N80A
33	W34A	Socket head cap screw (M4X10)	8	N80A
34	W062	Socket head cap screw (M6X16)	4	N80A
35	G860	Dies notch	4	N80A
36	7713	Die head post	1	N80A
37	W661	Hex-socket set screw (cone M6X6)	1	N80A
38		Adjustment plate (1/2"~3/4")	1	N80A
38		Adjustment plate (1~2")	1	N80A
38	L191	Adjustment plate (21/2~ 3")	1	N80A
39		Size plate (1/2~3/4")	1	N80A
39		Size plate (1~2")	1	N80A
39		Size plate (21/2~3")	1	N80A
40	16P407	Dies (BSPT 38mm, Alloy) (1/2~3/4")	1 set	N80A
40	16B430	Dies (BSPT 38mm, Alloy) (1~2")	1 set	N80A
40	16B450	Dies (BSPT 38mm, Alloy) (21/2~3")	1 set	N80A
40	161305	Dies (NPT 38mm, Alloy) (1/2~3/4")	1 set	N80A
40	16B030	Dies (NPT 38mm, Alloy) (1~2")	1 set	N80A
40	-	Dies (BSPT 38mm, Alloy) (21/2~3")	1 set	N80A